

NITTO UURU

Japanese wool yarn artisan village made and loomed into duplex wonders of dynamically different double-sided fabrics. Produced in Japan using century old techniques with an entirely new interpretation of the interdimensional weaving of the warp and weft. The textile creates a three-dimensional structure and architectural expression that gives it a completely different look on the front and reverse sides using the same color yarn.

email : ronit@ronitanderson.com

instagram @Ronit_Anderson

<https://Ronitanderson.com/>



Matsuribayashi



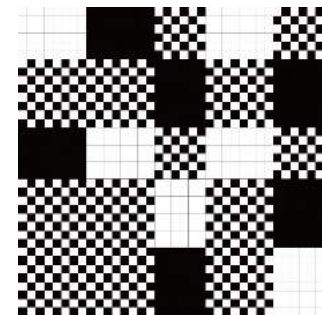
MTW22_21_NV

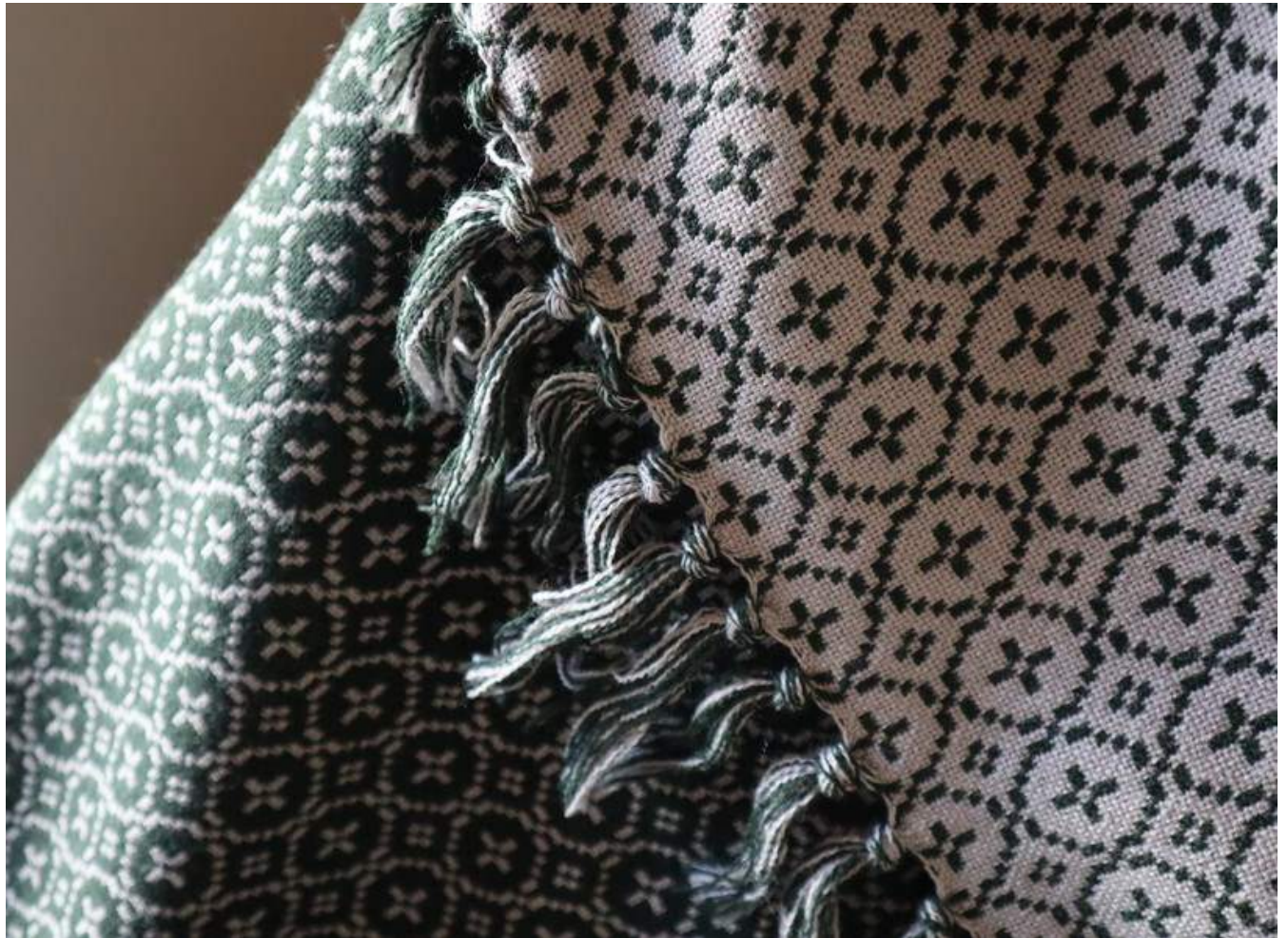
ref. MTW22_21_NV

150cm x 50 wool 72% Acryl28%

Tweed fabric that looks like tiny dots when viewed from the front, but from the back, it looks like bright stars. The blend of acrylic and wool creates vivid orange and yellow.

Since there is a difference in expansion and contraction depending on the quality of the yarn in this structure, careful attention and a lot of adjustments are necessary in weaving on the loom.





Fusya / windmill



MTW22_22_CM



MTW22_22_GR



MTW22_22_BK

ref. MTW22_22_BK
MTW22_22_GR
MTW22_22_CM

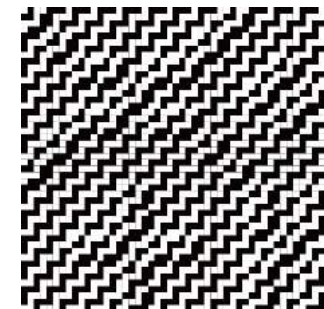
145cm x 30m

wool100%

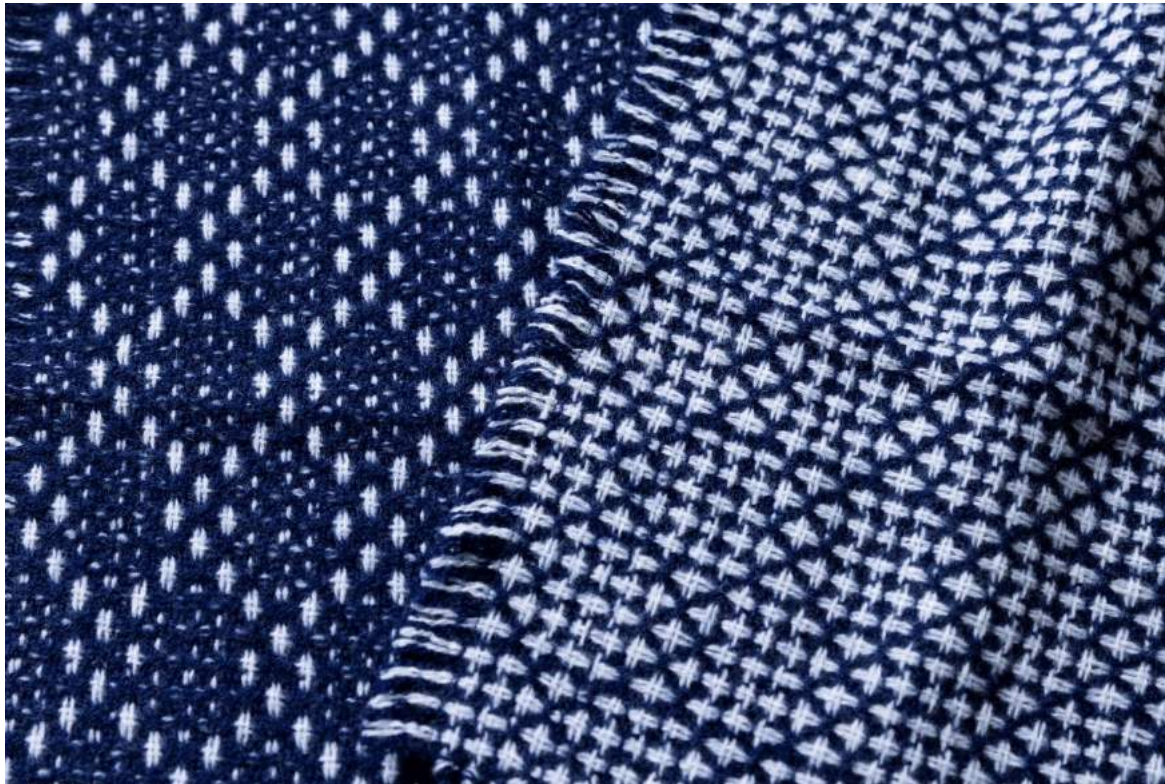
Using 2/12 thick roving thread.

Roving is to spin a long fiber which is originally suitable to spin fine yarn, into thick yarn, so the finish is softer than that made from short fibers.

Double weave needs a complicated way of threading on the loom, and it shows the difficulty of the technique that cannot be read from the organizational chart.



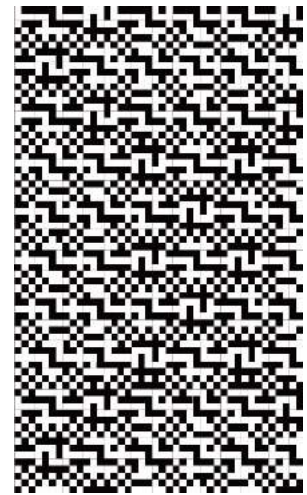




MTW22_23_NV



MTW22_23_BR



ref. MTW22_23_NV
MTW22_23_BR

142cm x 30m

wool100%

The pattern looks like Japanese SASHIKO stitching.

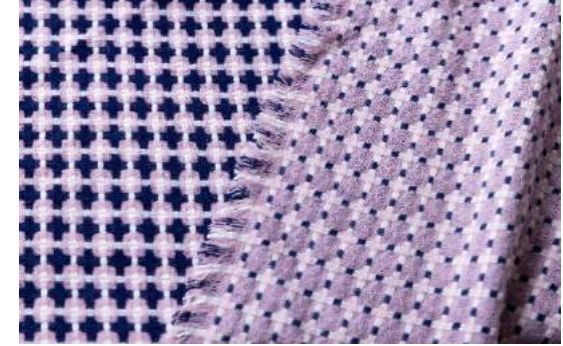
The soft and light texture like hand-knitting is created by the use of TOP yarn made at a spinning factory in Senshu.

TOP yarn is dyed in the state of cotton and then spun.

At this factory in Senshu, various colors of cotton are blended to create a unique shade.



MTW22_24_BL



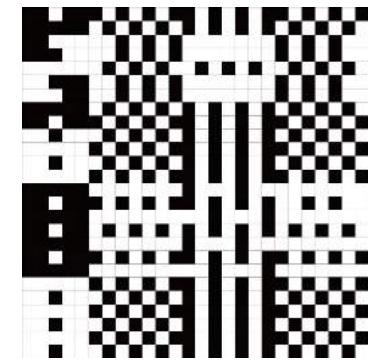
MTW22_24_PK

ref. MTW22_24_BL
MTW22_24_PK

145cm x 50m

wool100%

The cross part looks like a small lattice when viewed from the back.
By slightly changing the characteristics of the warp and the weft,
moderate shrinkage occurs, and a rounded square is formed.







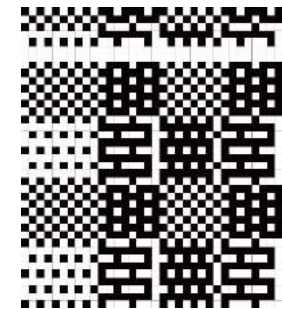
KDW22_21_NV

ref. KDW22_21_NV

150cm x 50m

wool 65% rayon25% nylon7% silk3%

The glossy orange and white parts are made with slab threads which have thick and thin parts coexist. Three threads are twisted together to create the natural feel and unique look.





KDW22_22_WH

ref. KDW22_22_WH

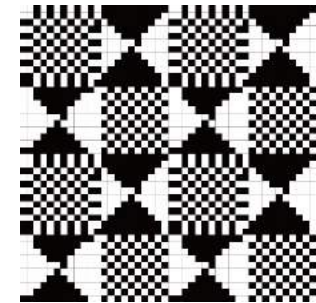
150cmx50

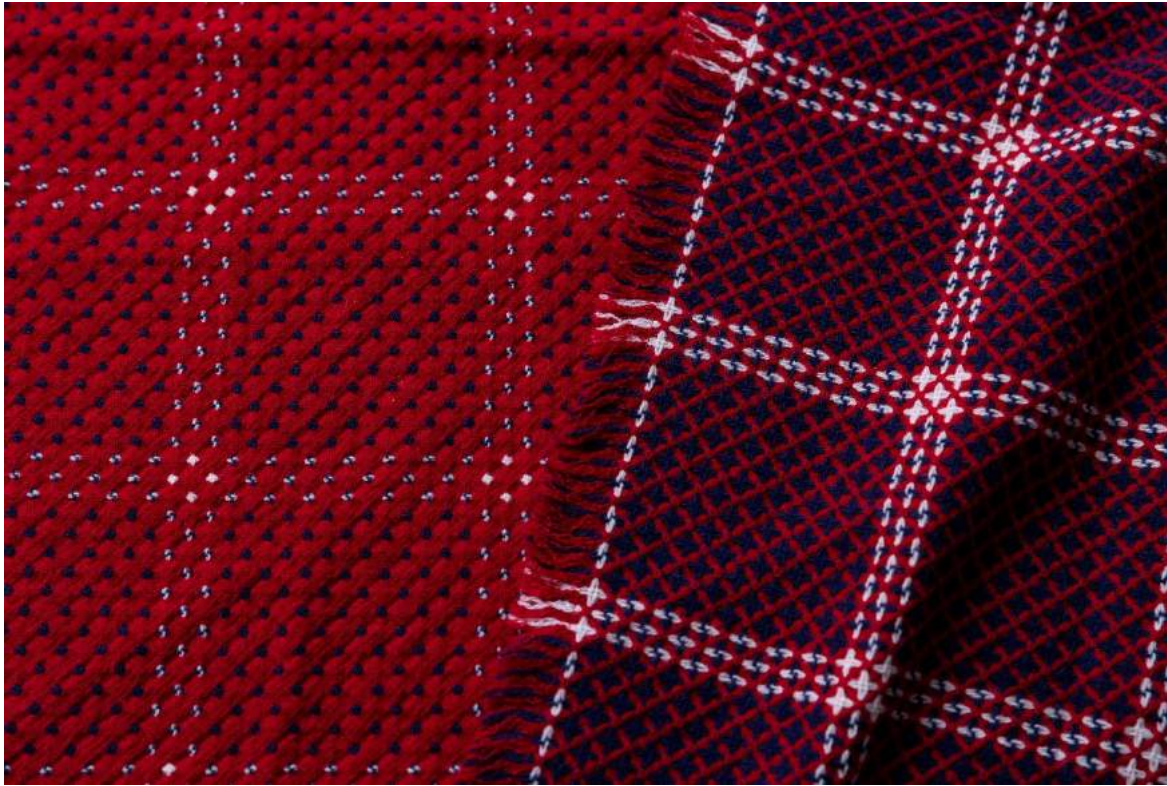
wool 88% / nylon 7% / aplaca 5%

A check is set up with a round structure that runs like a rosary.

The check that dark navy and blue intersect.

When weaving a rough weave, the yarn is easy to break, so we sometimes use a blended yarn in which nylon is mixed with wool for reinforcement. The organization chart, which also became the brand name, looks like an hourglass.





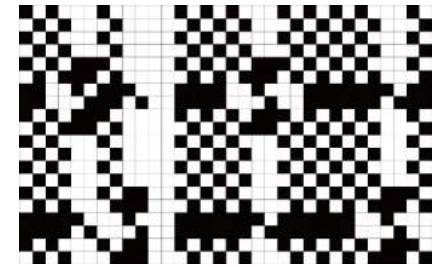
KDW22_23_RD

ref. KDW22_23_RD

145cm x 50m

wool 100%

The red thread uses the 1/30 twin thread, and the plaid part of the polka dots uses the thicker 16th twin thread. The combination of different counts creates a fluffy texture, and the unique look both on the front and the back.





KDW22_24_GR



KDW22_24_NV

ref. KDW22_24_GR
KDW22_24_NV

146cm x 50m

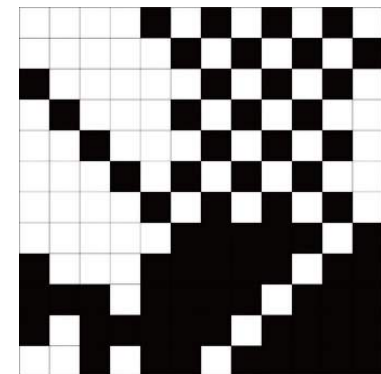
wool 100%

The houndstooth pattern like a pinwheel is formed by a mysterious organizational chart like a piece of art.

A three-dimensional expression is created by weaving threads of three different thicknesses.

A very old spinning machine spins yarn on a large site with rattling.

It is made with very soft fiber which is originally suitable for knitting, so 3 yarns are twisted together to avoid breaking during weaving.

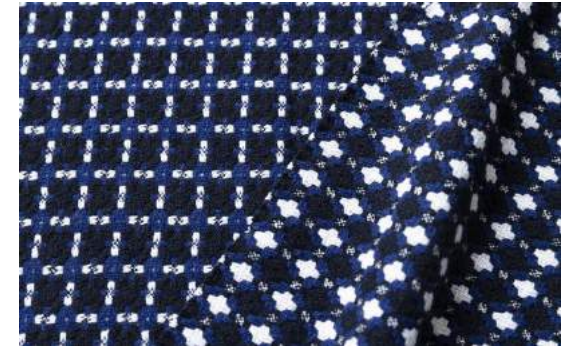




Chuya / day and night



KDW22_25_WH



KDW22_25_NV

ref. KDW22_25_WH
KDW22_25_NV

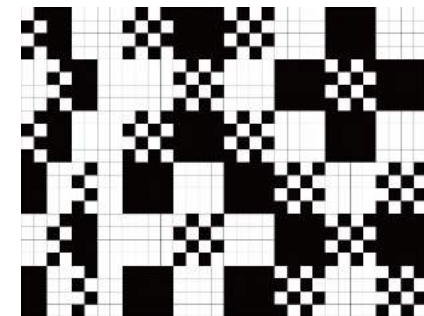
148cm x 50m

wool100%

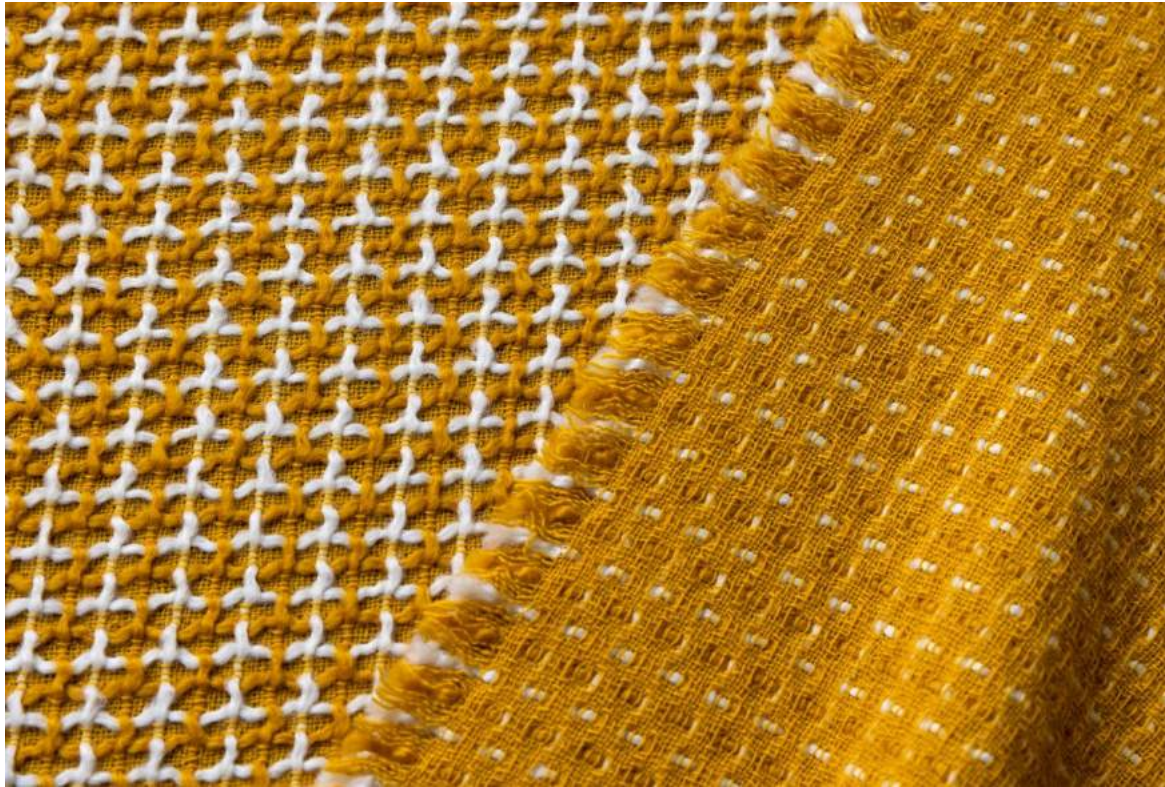
A tweed made from a fabric structure that looks like a lovely flower.

This textile is woven roughly to give it a softer texture.

It looks like a plaid pattern when viewed from the back.







KNW_22_21_YW

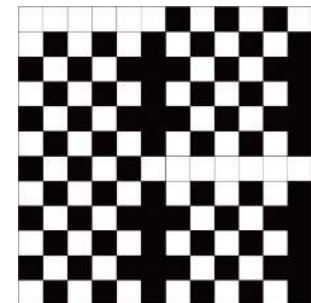


KNW22_21_NV

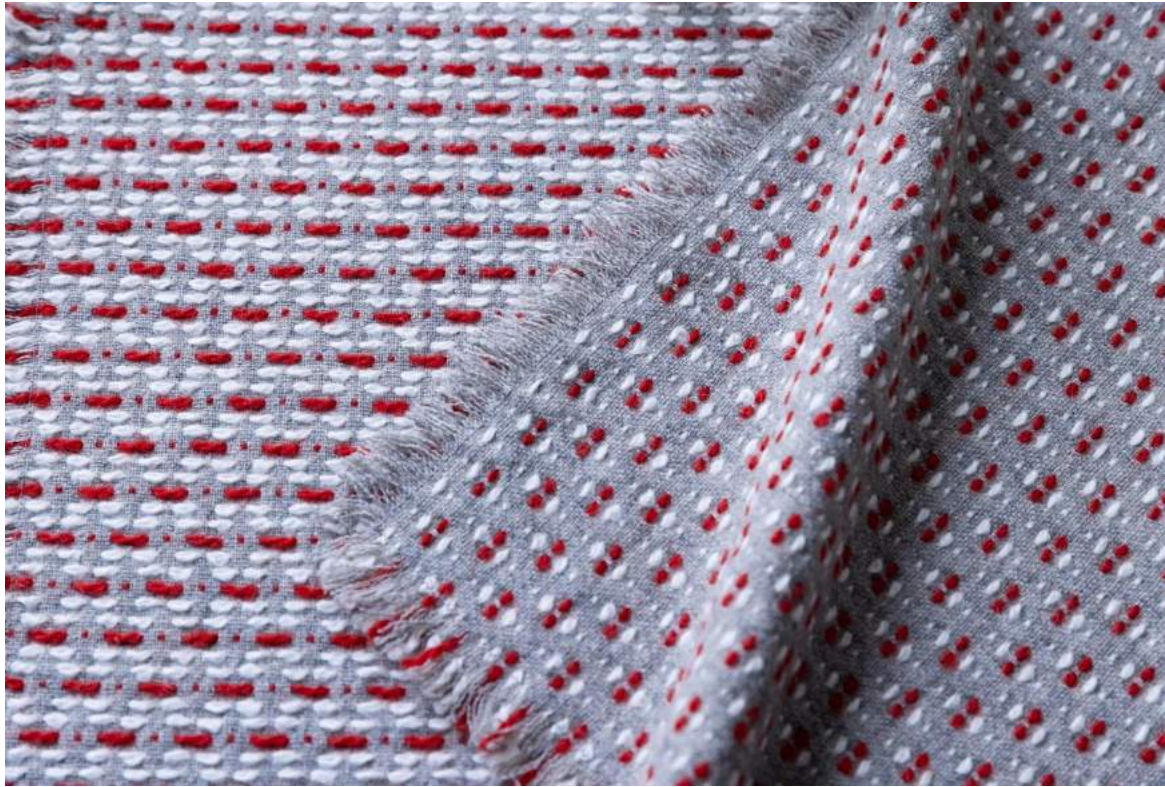
ref. KNW22_21_YW
KNW22_21_NV

140cm x 30m wool98% nylon2%

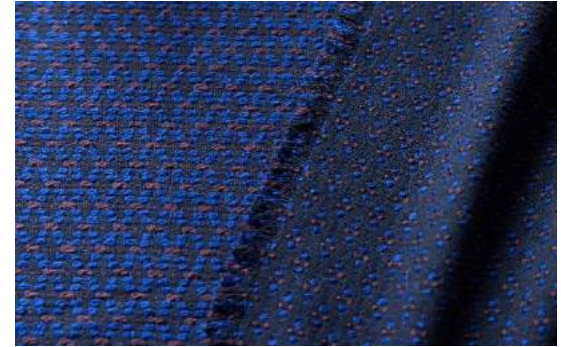
The thickest thread is 1 / 1.5 This uses two 1/3 roving threads.
Before weaving, untwist the yarn and finish it in straight.
Then pull these two threads together and wrap a thin nylon loosely.
The final result is one thread (1 / 1.5).







KNW_22_22_GY



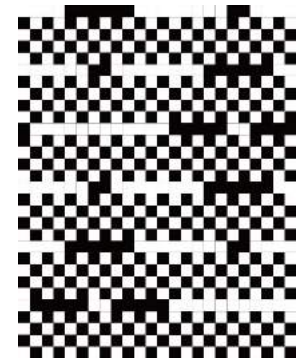
KNW22_22_NV

ref. KNW22_22_GY
KNW22_22_NV

148cm x 30m

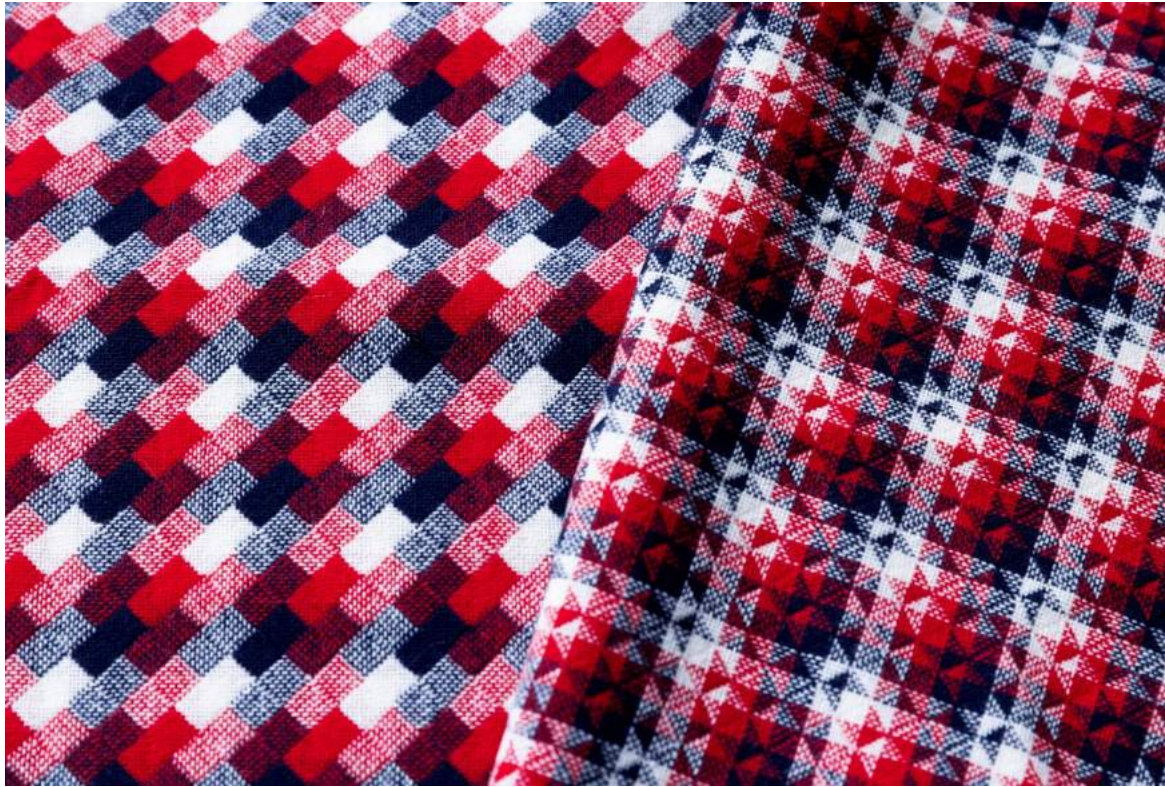
wool85% nylon7% Acryl3% alpaca2%

Two types of yarn run sideways like Morse code, one is the fluffy and loosely twisted and the other is strongly twisted. Wools with different properties swell differently when soaked in water in the final process, creating a non-uniform look. Then pull these two threads together and wrap a thin nylon loosely.

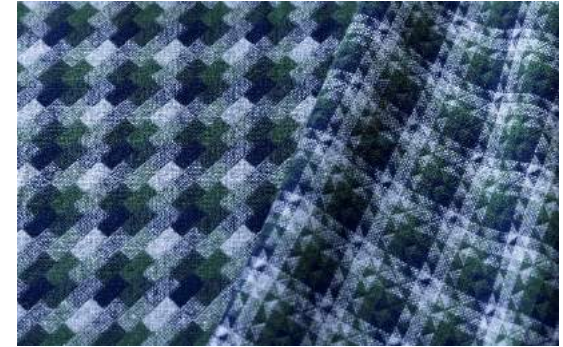




Ishidatami / pavement



KNW_22_23_RD



KNW22_23_GR

ref. KNW22_23_RD
KNW22_23_GR

150cm x 50m

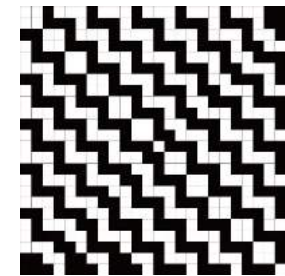
90% wool / 10% nylon

A mysterious pattern in which rectangles are stacked diagonally.

The organization chart is simple, but the pattern is made by creatively devising the threads arrangements.

Woven slowly on a shuttle loom to give it soft texture.

Then pull these two threads together and wrap a thin nylon loosely.

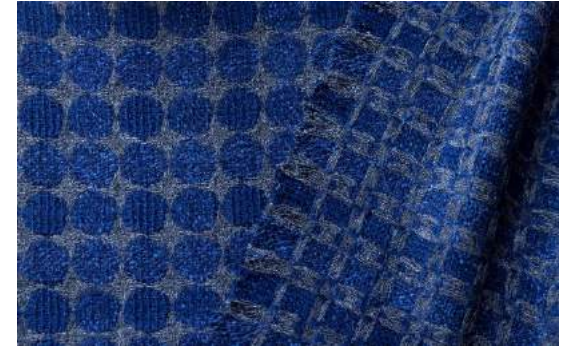




Jugo-ya / full moon



KNW_22_24_BR



KNW22_24_NV

ref KNW22_24_BR
 KNW22_24_NV

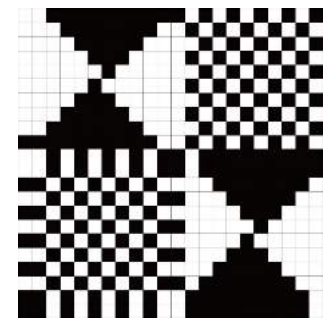
130cm x 30m

wool72% rayon 18% silk8% nylon2 %

The distorted dots are formed by the thread which has the structure like hand-spun yarn.

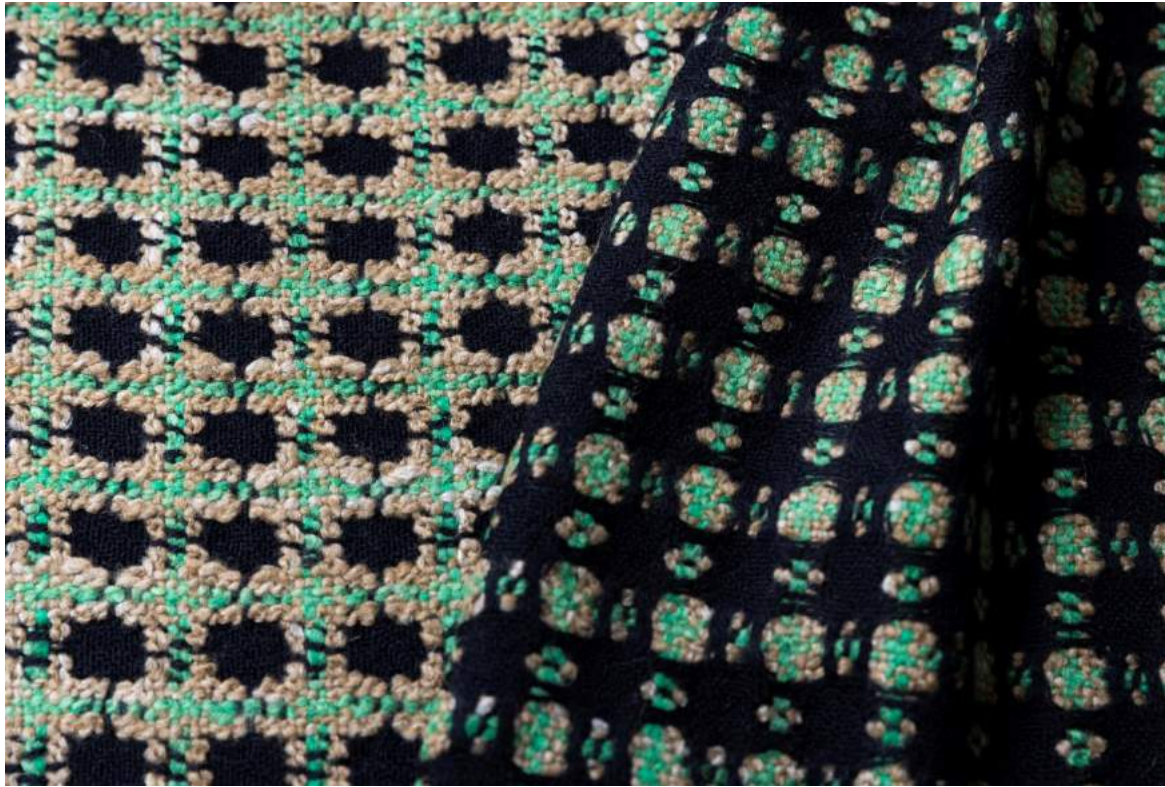
The dot part contains three types of threads: rayon, wool, and wool / silk / nylon.

The luster of rayon, the natural nep of silk, and the dull wool are mixed together to give depth to the expression.





Hisui / Jade



KNW_22_25_GR

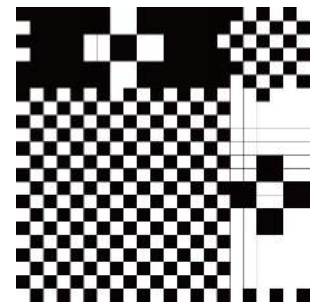
ref. KNW22_25_GR

146cm x 30 wool63.5% alpaca13.5% Acryl18% silk 5 %

The emerald green thread consists of four materials : wool, acrylic, alpaca, and silk.

These four materials are not evenly blended and are spun to appear randomly in the yarn.

This fabric is characterized by its irregularness and uneven color appearance, which almost looks like hand-spun.





NITTO UURU

email : ronit@ronitanderson.com

instagram @Ronit_Anderson

<https://Ronitanderson.com/>



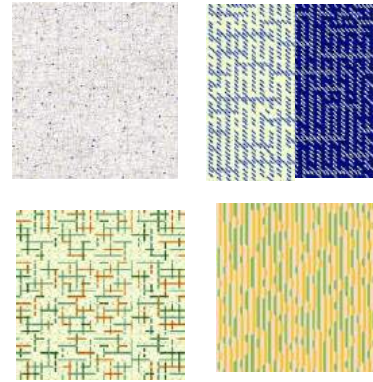
NITTO UURU - AW23 collection

TEXTILE BOOK

email : ronit@ronitanderson.com

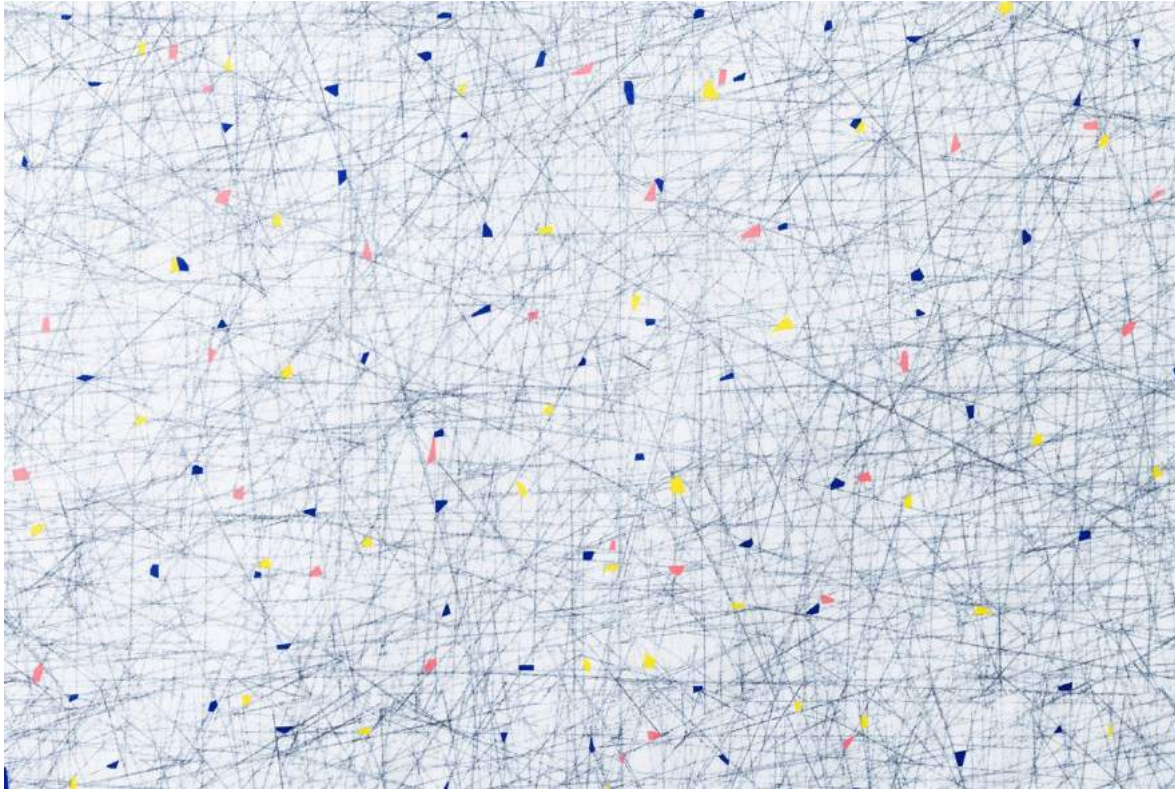
instagram @Ronit_Anderson

<https://Ronitanderson.com/>

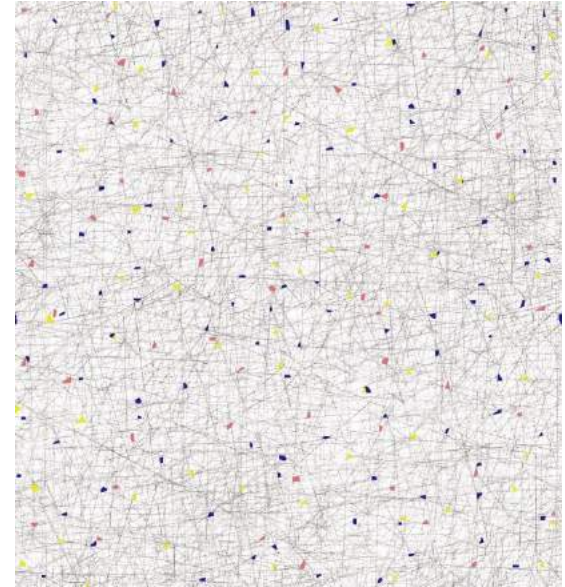




HUOPA



666001



HUOPA

フウオパ

cotton 100

110cm x 50m

フオパ、フィンランド語で『フェルト』。フェルトは人間が作った最初の生地と言われていて、繊維が色々な方向で絡み合っていて出来ています。

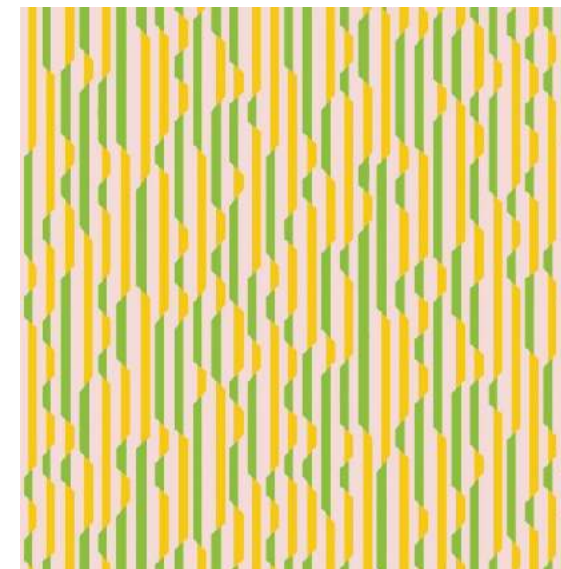
その構造からインスピレーションを受け、様々な方向に走る線で出来たプリント柄を考えました。

小さなカラーチップが表面に散りばめられていて、宝探しのようにつけ出ししながら楽しんで欲しいです。（プリント・京都）

HUOPA Huopa means « felt » in Finnish. Known as one of the primary fabric that human made, felt is made of non-structured fibres, that are running in all directions. I interpreted felt through a print design, made of lines drawn in all direction, forming a vibrating web. Some little colour chips in-between the lines are giving to the design some playfulness and joy.



LANKA



666002

LANKA

cotton 40 / acrylic 32 / wool 28

ランカ

155cm x 50m

ランカ、フィンランド語で『糸』

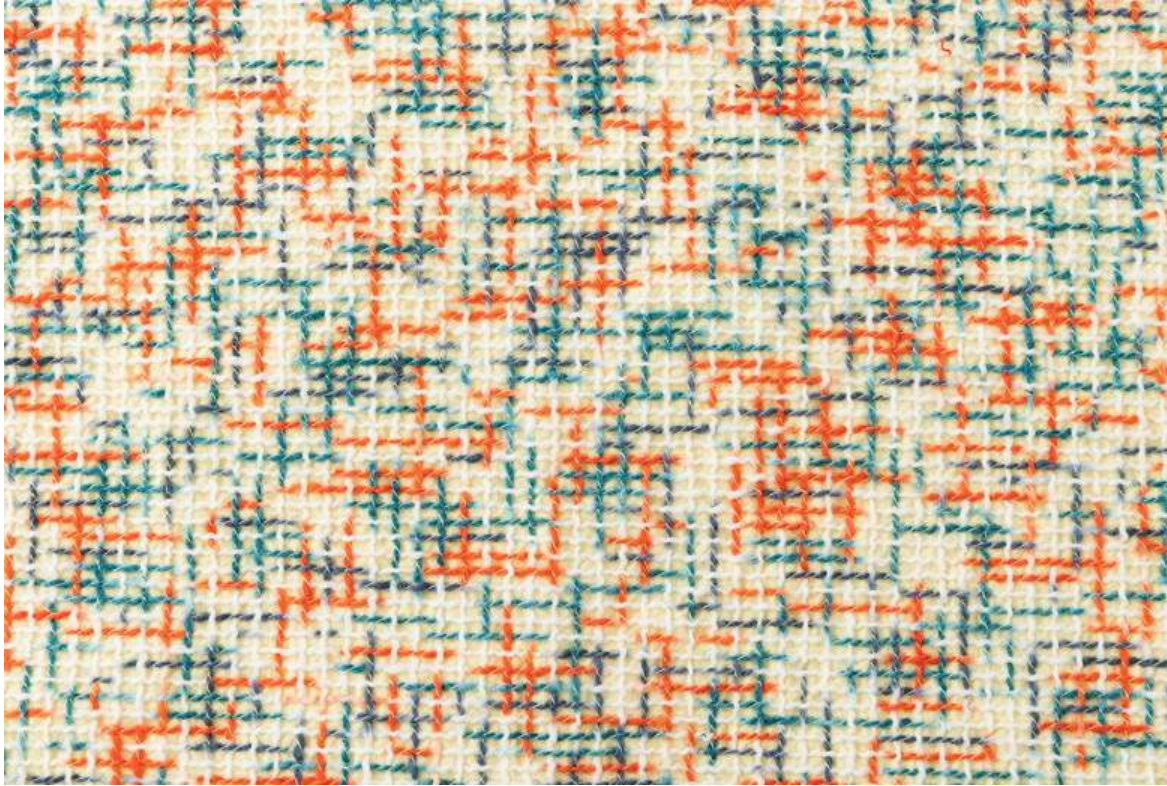
当たり前なのに聞こえるかもしれませんが、生地は糸の絡み合せで出来ています。でもその糸自体に注目をするのはあまりありません。

ランカは撚った糸を拡大したようなモチーフを描いた、糸を主役とした柄です。（ジャガード・桐生）

Lanka means « yarn » in Finnish. It can be obvious but fabrics are made of yarns. But somehow, we rarely pay attention to them themselves. Lanka is a jacquard woven fabric, having as pattern large-scaled looking twisted yarns.



VERKKO



666003

VERKKO

cotton 59 / wool 41

ヴェルッコ

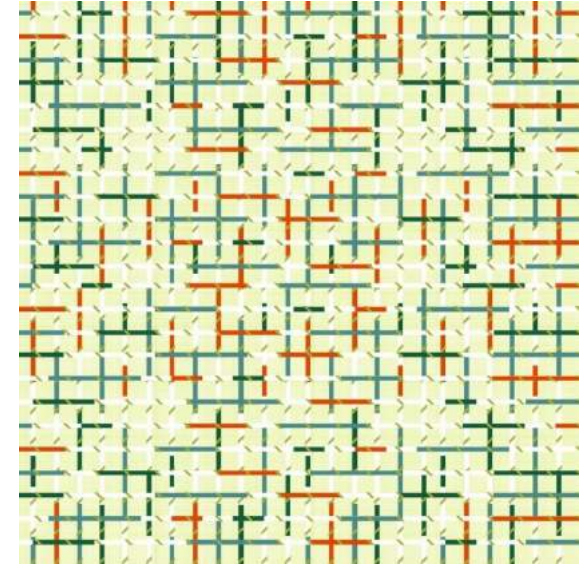
144cm width

ヴェルッコ、フィンランド語で『グリッド』

生地のもっとシンプルな構造は経糸と緯糸が順番に織り合わさって、チェック柄が出来上がるものです。

そのシンプルなグリッドの構造をユニークなカラフルな糸を使って表現することで、

新しく色鮮やかなテキスタイルが生まれました。(染、織・一宮)

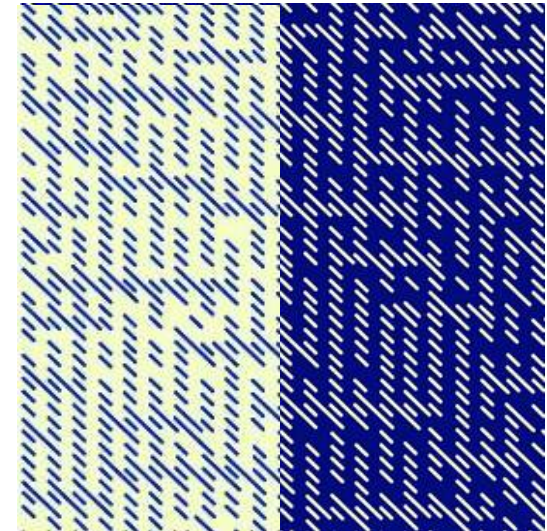
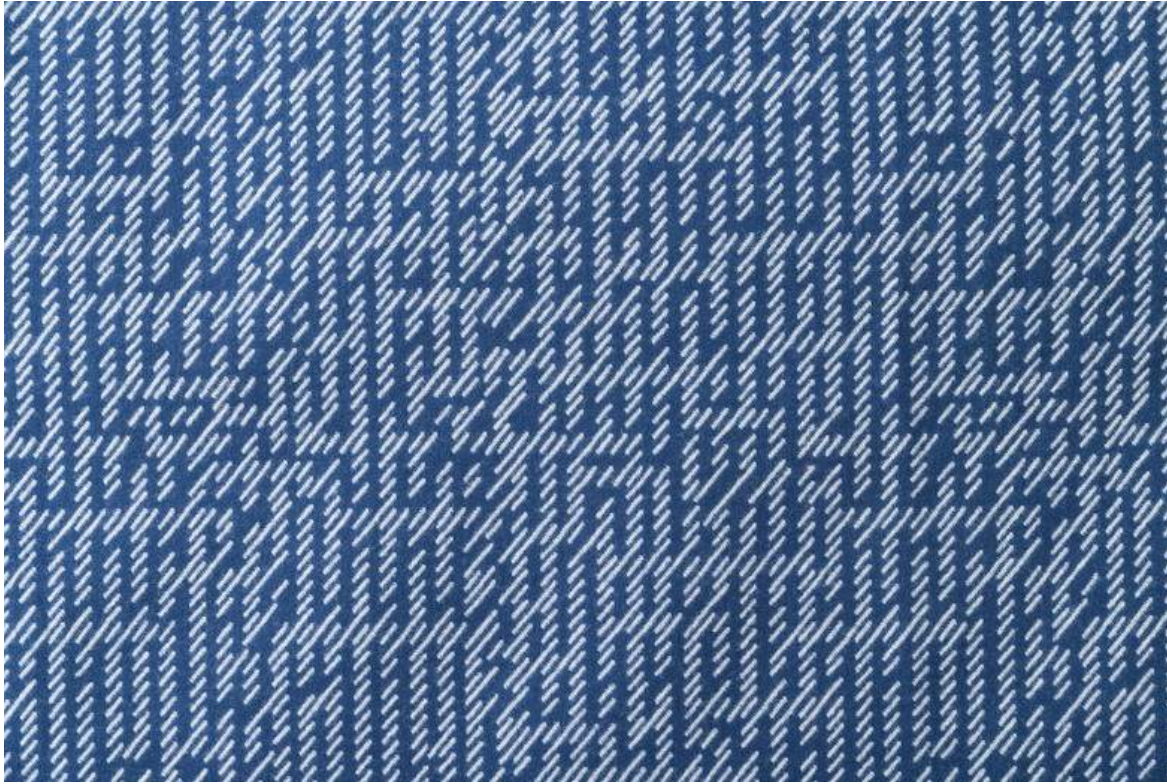


Verkko means « grid » in Finnish. This pattern celebrates the most essential structure of a fabric: the grid web pattern of interwoven warp and weft.

By designing a special dyed yarn dyed in a Japanese factory, this simple grid pattern can look vibrant.



KUVIO



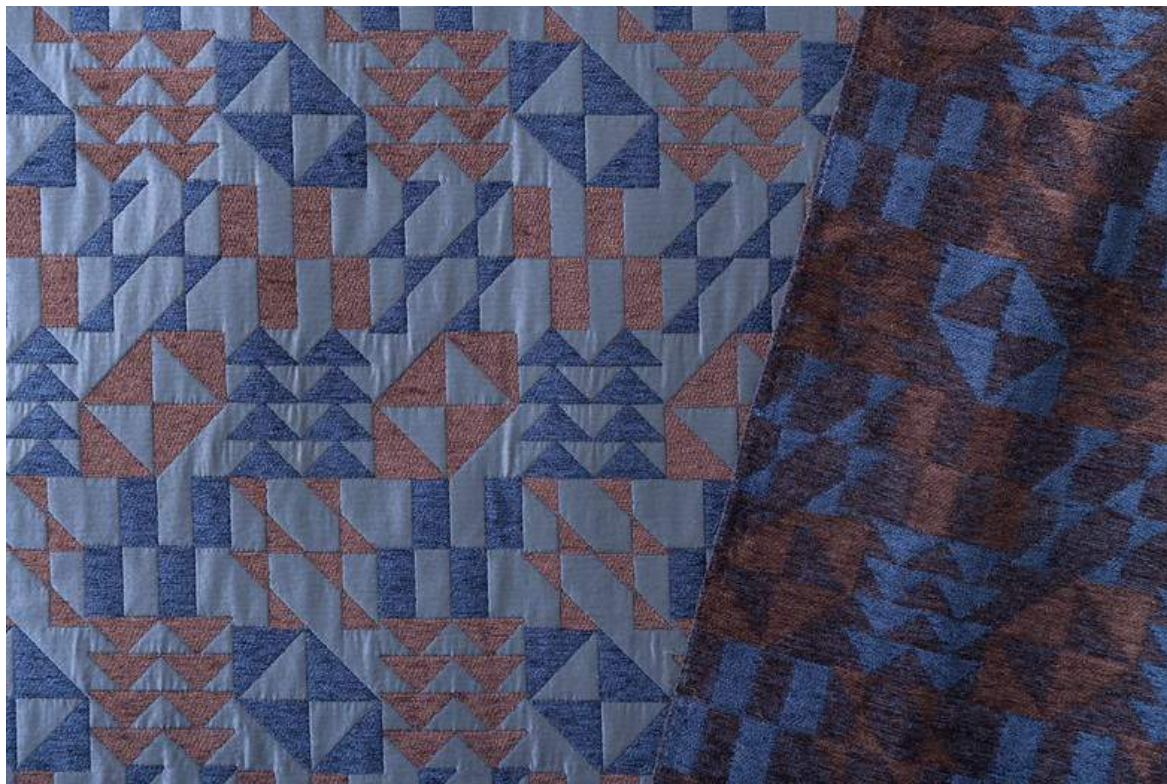
666004

KUVIO
クヴィオ

wool 90 / nylon 10
155cm x 40m

Kuvio means « pattern » in Finnish. Kuvio is the result of a lucky find of a special yarn in a spinning factory. The unique twisted yarn was creating a pattern naturally.





777002 navy



777001 yellow

TSUMIKINOIE / wooden blocks

cotton 40% / rayon 40% / polyester 20%

108cm width

The pattern resembling the stack of triangular and square blocks is expressed with piled Chenille threads, and the surface is slightly plump and has a three-dimensional effect.

We use two types of Chenille thread, one glows and the one does not, so the impression of the imprint gives it a deep look.



777004 navy



777003 beige



三寒四温 SANKANSHION / early spring

wool 84% / acrylic 14% / nylon 2%

138cm x 40m

Loosely woven soft tweed with various threads such as chenille yarns and mock twist yarns. The yellow color palette that makes you feel nostalgic for spring and the black one makes you think of cold days. These are woven in a plaid pattern, just like looking at those sceneries from the window.



777006 charcoal



777005 gray

羊雲 hitsujigumo

cotton 52% / polyester 48% (刺繡糸・cotton 100%)

98cm width

Cross-stitch like cotton embroidery shows the changing autumn sky.

Three sceneries are stiched on this textile, a slightly chilly evening, field of the fallen leaves and the dark night sky.



777007 gray



777009 red



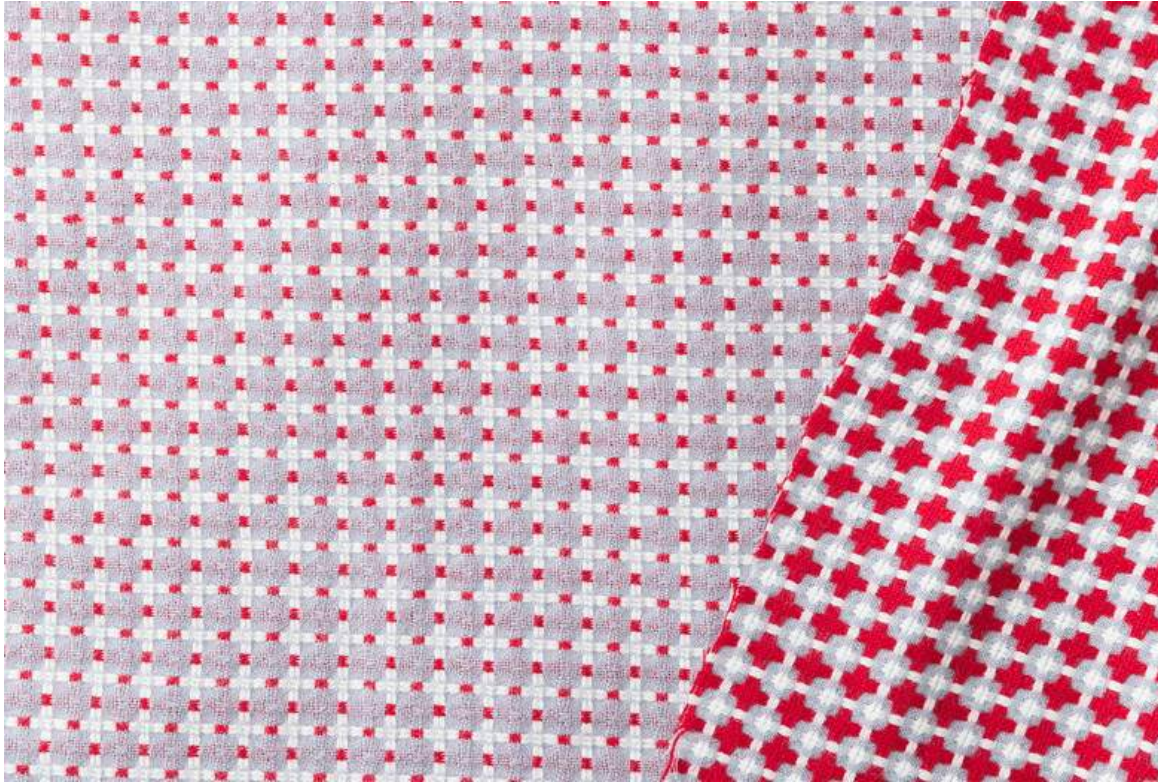
777008 blue

花雪 hanayuki

wool 87% / silk 11% / nylon 2%

144cm width

A new interpretation of Daldräll weaving, the traditional weaving pattern in the Darlana district of Sweden. Hadnspon like wool-silk yarns are loosely woven into the weft to create a fluffy textile showing frosty flowers with fallen snow on top.



777010 red (from the back)

花格子 hanakoshi

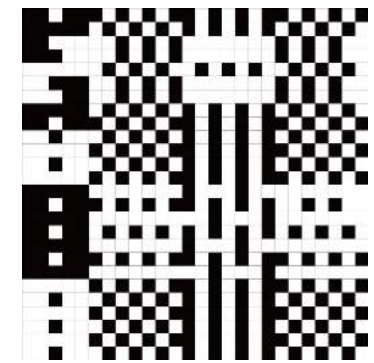
wool 100%
145cm x 50m

145cm x 50m

The cross part looks like a small lattice when viewed from the back.
For the cross part, 2/12 roving yarn is used for the warp and 2/16 yarn for the weft.
By slightly changing the characteristics of the warp and the weft,



777011 blue



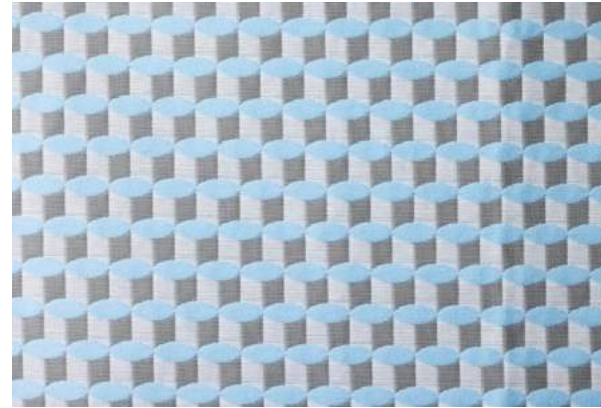
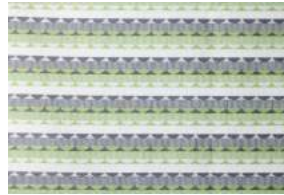


0043 Kawara

cotton 81 / polyester 19

KAWARA

Patterns / Kawara

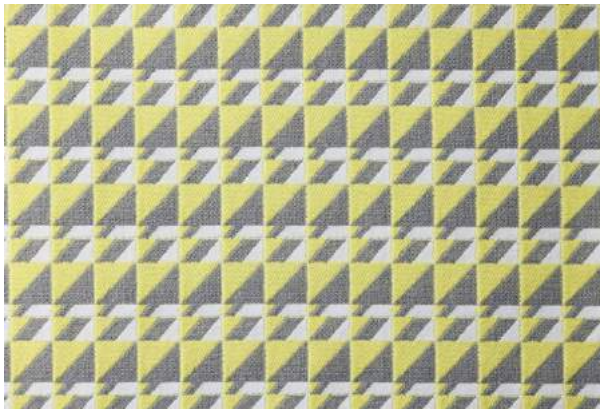


0027 stool

cotton 84 / polyester 16

STOOL

isometric / stool

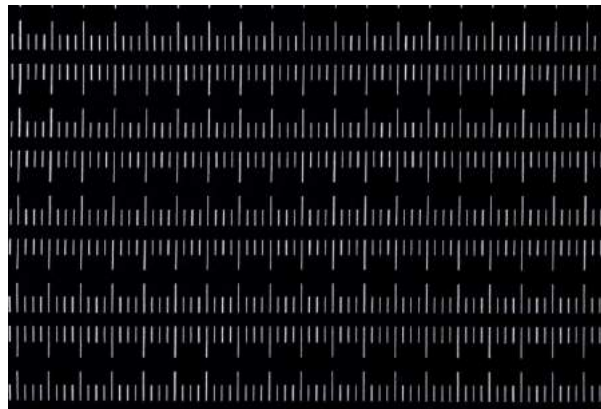


0060 triangle

cotton 77 / polyester 23

TRIANGLE

scale / triangle

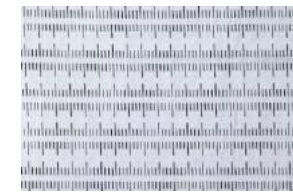


0002 ruler

cotton 100

RULER

scale / ruler

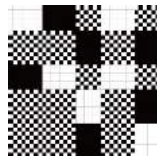




777012 navy

祭囃子 matsuribayashi
ref. MTW22_21_NV

150cm x 50 wool 72% Acryl28%



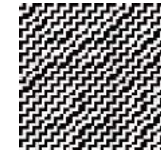
777014 camel

風車 kazaguruma
ref. MTW22_22_CM
MTW22_22_BK

145cm x 30m wool100%



777013 black



777015 navy

夜空 yozora
ref. MTW22_23_NV

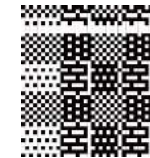
142cm x 30m wool100%



777016 navy

霜柱 shimobashira
ref. KDW22_21_NV

150cm x 50m wool 65% rayon25% nylon7% silk3%

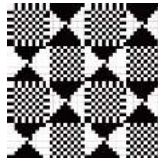




77017 white

おはじき ohajiki
ref. KDW22_22_WH

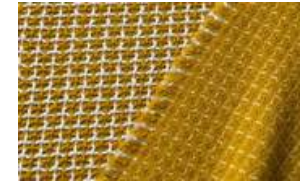
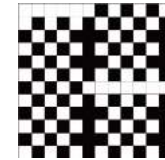
150cmx50 wool 88% / nylon 7% / aplaca 5%



777019 navy

うねり uneri
ref. KNW22_21_YW
KNW22_21_NV

140cm x 30m wool98% nylon2%



777018 yellow



777020 gray

刺し子 sashiko
ref. KNW22_22_GY

148cm x 30m wool85% nylon7% Acryl3% alpaca2%



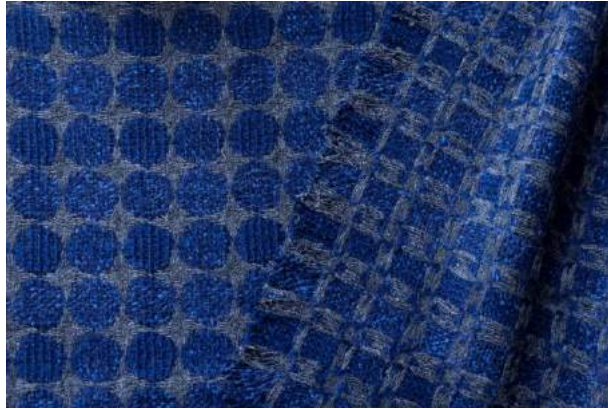
777021 red

石畳 ishيداتami
ref. KNW22_23_RD
KNW22_23_GR

150cm x 50m wool 90 / nylon 10



777022 green

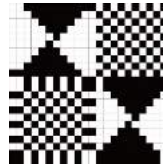


777023 navy

十五夜 jyugoya
ref KNW22_24_NV

130cm x 30m

wool72% rayon 18% silk8% nylon2%

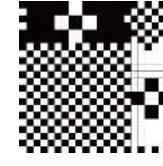


777024 green

翡翠 hisui
ref. KNW22_25_GR

146cm x 30

wool63.5% alpaca13.5% Acryl18% silk 5%



NITTO UURU - AW23 collection

email : ronit@ronitanderson.com

instagram @Ronit_Anderson

<https://Ronitanderson.com/>