

As Good As Old Better Than New

Gilt Leather for the 21st century

By



Lutson

Lutson
Gouldleder

Mises en page et éléments graphiques protégés par les droits d'auteur de Blurb Inc. Livre réalisé à l'aide des services Blurb d'édition créative. L'auteur conserve les droits d'auteur sur ses contributions à ce livre.





The Studio

Over the years
Lutson Goudleer
has set the standards for
Gilt Leather.
From the early eighties on
till the present day,
our leathers stay
unmatched in
quality and aesthetics.
At Lutson we have decided to
stick to tradition and
fight the
uniformity of this industrialized
world.
Lutson Leathers as always,
made with
Passion &
"Savoir Faire"



Jan Siberechts
An interior with Gilt Leather.
1661 - 1672

INDEX

Page:

4- 5	Palmette	55	Marot Border - Flower border Pose & Tulip Border
6 - 7	Eve by Brinkman Collections	56 - 57	Ottoman
8 - 10	Korfus	58 - 61	Lauderdale
12 - 13	Laurier	62 - 64	Fleurance
14 - 15	Soleil	66 - 67	Double Damask
16 - 17	Grand Soleil	68 - 69	Cartouche
18 - 19	Plaisance	70 - 71	Curules
20 - 25	Abondance	72 - 73	Utopia
26 - 29	Marot	74 - 75	Verne
32 - 34	Torino Passion	76 - 77	Deco
36 - 39	Verentuil	78 - 79	Parrot Panel
40 - 42	Almohadon	82 - 85	Modern Lutson
43	Gerona	86	Grimm - Deco - Nora & Keys
44 - 47	Mandarin	87	Chair Seat & Back
48 -	Domino		
49 - 51	Dragon		
52 - 54	Moncla		



Palmette

58,5 x 46.5 cm 23 x 29.1"

Origin : Flanders

Circa 1700

A polychrome version

Palmette
on the elevator doors of
Hotel Adlon Berlin





EVE

88 X 69 cm 34.6 X 26 "

Original design by Brinkman Collections
produced by Lutson Goudleer

Eve
With a gilded outline





Korfus

55 x 46.5 cm 21.6 x 18.3"

Origin: Flanders or Holland

Circa: 1750

A polychrome version



The Korfus panel was used to re-upholster a set of dining room chairs from the Isabella Stewart Gardner Museum. The original panels were ruined beyond salvation.

In close cooperation with the ISGM conservators we produced the set of panels as to be seen in the Tapestry Room

—Gianfranco Pocobene, Head of Conservation about the tapestry room:

“The Tapestry Room is one of the few galleries affording room to wander freely. The sense of space and openness that visitors will discover in the restored Tapestry Room will be amazing—and unexpected for many—and a celebration of Gardner’s original vision.”

Pictures: Courtesy of ISGM Boston



Korpus





Laurier

55.5 x 46.5 cm 22.6 x 18.3"

Origin: Flanders

Circa: 1715

A polychrome version



Laurier in the wood-paneled bar
of a stunning mansion
by David Easton



Soleil

59 x 49 cm 27.4 x 19.2"

By Lutson

Soleil

Monochrome on a silver ground





Grand Soleil

120 x 90 cm 47.2 x 35.4"

by Lutson.

Panel made of two sections.



Plaisance

69.5 x 79 cm 27.4 x 31.1"

Origin: Flanders

circa: 1750

An interpretation by Lutson



Traditional 18th century painting.
A polychrome version.



The original Plaisance can be seen in the
Plantin-Moretus Museum Antwerp.

Above: A set of four panels



Abundance left side

Abundance

80.5 x 63 cm 31.7 x 24.8"

Origin: Flanders

Circa 1650

A full polychrome version on a silver ground



Abundance right side

This classic baroque design can be seen in the
Rubens House Antwerp.



Abonance

A monochrome version on a gilded ground



Made for Mr W.H.Vanderbilt
By the Herter Brothers circa 1880
This Side chair is one of the few surviving examples.
Here, upholstered with Lutson's Abundance
Burgundy on a Rich Gilded Ground.
To be seen in the "American Wing."
of the
Metropolitan Museum of Art N.Y.

It's in the details



By Atelier Versace

Abondance

Biege on a silver ground
with gilded birds.





Marot

76.5 x 61.5 cm 30.1 x 24.2"

Origin: Holland

Design by Daniel Marot

Circa: 1710

A full polychrome "traditional" 18th century version,
made for Vegeholm Slott Sweden



This same Marot with polychrome painting on an Antiqued silver ground creates a complete different atmosphere. The structure of the design seems to be partly erased by the discreet yet dominating silver ground

Marot





Marot and Key's
were used to upholster this chair



Slipper by Edward Green
Jermyn Street London



Heritage:

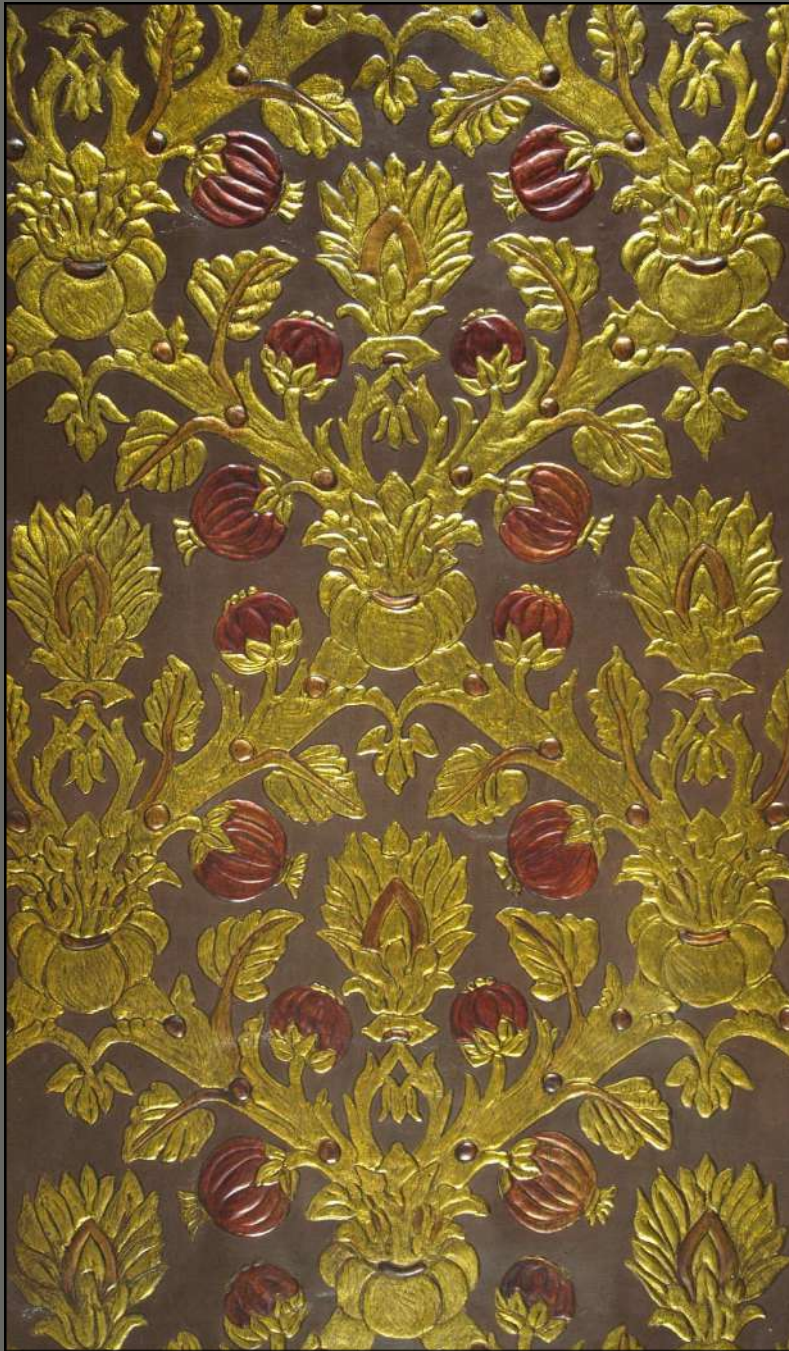
MetLife Boardroom New York
Gilt Leather replicas by Lutson

Picture: courtesy of MetLife NY

Heritage

Gilt Leather replicas by Lutson are used by institutions worldwide.





Torino Passion

89 x 55 cm 35 x 21.6"

cutting lines at W 41 cm 16.14"

A semi polychrome version

Torino Passion



Torino Passion





Verentuil

73 x 60 cm 28.7 x 23.6"

Origin: Flanders

Circa 1710

A polychrome version



Gilt leather Antependium.
Church of Mont
Hautes-Pyrénées
France

Verentuil
A polychrome version

Verentuil

A monochrome version.

A set of chairs





Verentuil
In a chalet by
Guy Thodorov



Almohadon

70 x 60 cm 27.6 x 23.6"

A panel from circa 1500 is to be seen in the "Museu de l'Art de la Pell" Vic Spain.
Origin: Antiquity

Grand Almohadon

75 x 65 cm 29.5 x 25.6"

Beige on Beige





Details of the Grand Almohadon

The arches are painted with a
metallic oil paint





Gerona

80 x 60 cm 31.5 x 23.6"

Origin: Spain
Circa 1520



Mandarin

74 x 74 cm 29.1 x 29.1"

Origin: The Mandarin is an interpretation by Lutson of a document from the Hirsch wallpaper collection

Circa: 1700

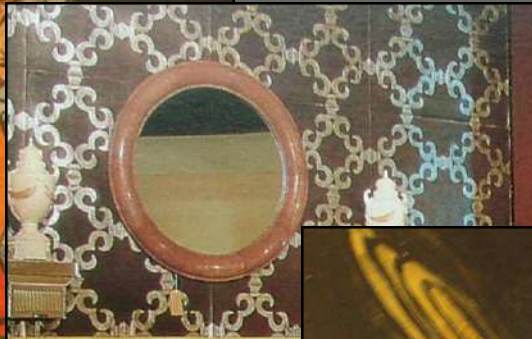
Mandarin

A full polychrome "custom" version



Mandarin

It's in the details



Mandarin at the Tatiana Tafur showroom London





Domino

80 x 56 cm 31.5 x 22"

Origin: Lutson

Based on an original Spanish design from the 17th century.
A version from the Silver & Gold Collection



Dragon

77.5 x 59.5 cm 30.5 x 23.4"

Origin: Flanders

Circa 1750

A polychrome version

Dragon







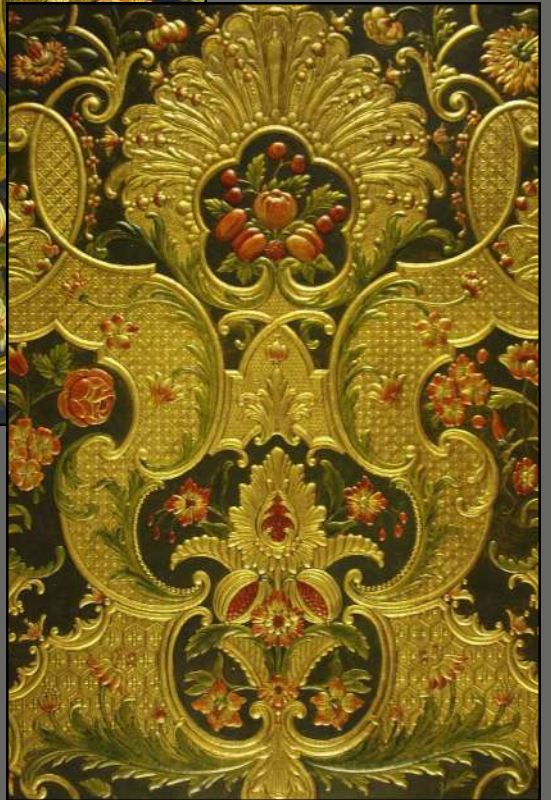
Moncla

76 x 60 cm 29.9 x 23.6"

Origin : Holland, possibly a Daniel Marot design.

Circa 1720

A polychrome version



Moncla

A set of 4 panels



Borders



Marot Border 33.5 x 61.5 cm 13.2 x 24.2"
Origin: Holland Circa 1710



Flower Broder 25.5 x 65 cm 10 x 25.6"
Origin: Flanders Circa 1670



Rose & Tulip Border 16 x 60 cm 6.3 x 23.6"
Origin: Flanders Circa 1670



Ottoman

75 x 75 cm 29.5 x 29.5"

Origin: The Ottoman is largely inspired by ornamental borders as seen on Humayun's tomb in New Delhi, the mausoleum built in 1570 by Hamida Banu Begum, widow of Humayun Emperor of the Indian Mughal Empire

An interpretation by Lutson



At Decorex London

Above: Leather trunk by
Rémi Brazet and Elise Blouet
Master craftsmen from
"Grands Ateliers de France.com"



Lauderdale

83 x 67 cm 32.7 x 26.4"

Origin: Spain
Circa 1680



An interior by
Nicholas Haslam



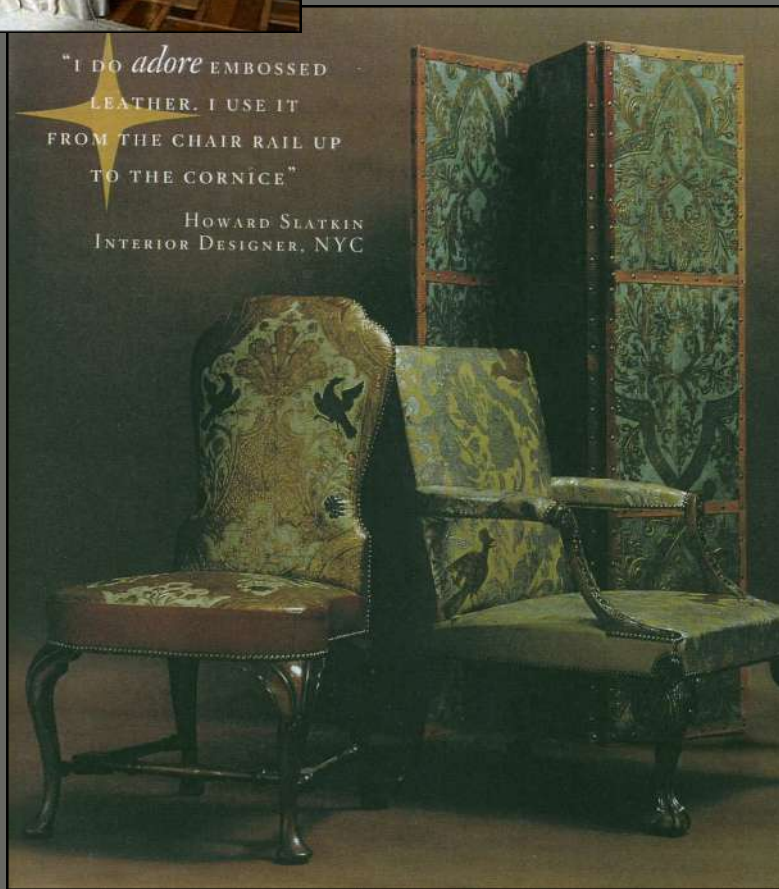
The VIP room of a
New Bond Street jewelry shop





"I DO *adore* EMBOSSED
LEATHER. I USE IT
FROM THE CHAIR RAIL UP
TO THE CORNICE"

HOWARD SLATKIN
INTERIOR DESIGNER, NYC



St Peter's Church
Vic-Fezensac
A mobile altar with
Two Marot panels as antependium
and at each side a
Lauderdale panel.





Fleurance

58 x 77 cm 22.8 x 30.3"

Origin: Spain
Circa 1750

above: a set of four polychrome panels.

Fleurance

2 sets of 2 Fleurance panels



Fleurance

A polychrome version on a gilded ground.
Traditional 18th century painting.







Double Damask (one Panel is a set of four sections)

100 x 74 cm 39.4 x 29.1"

Origin: possibly English.

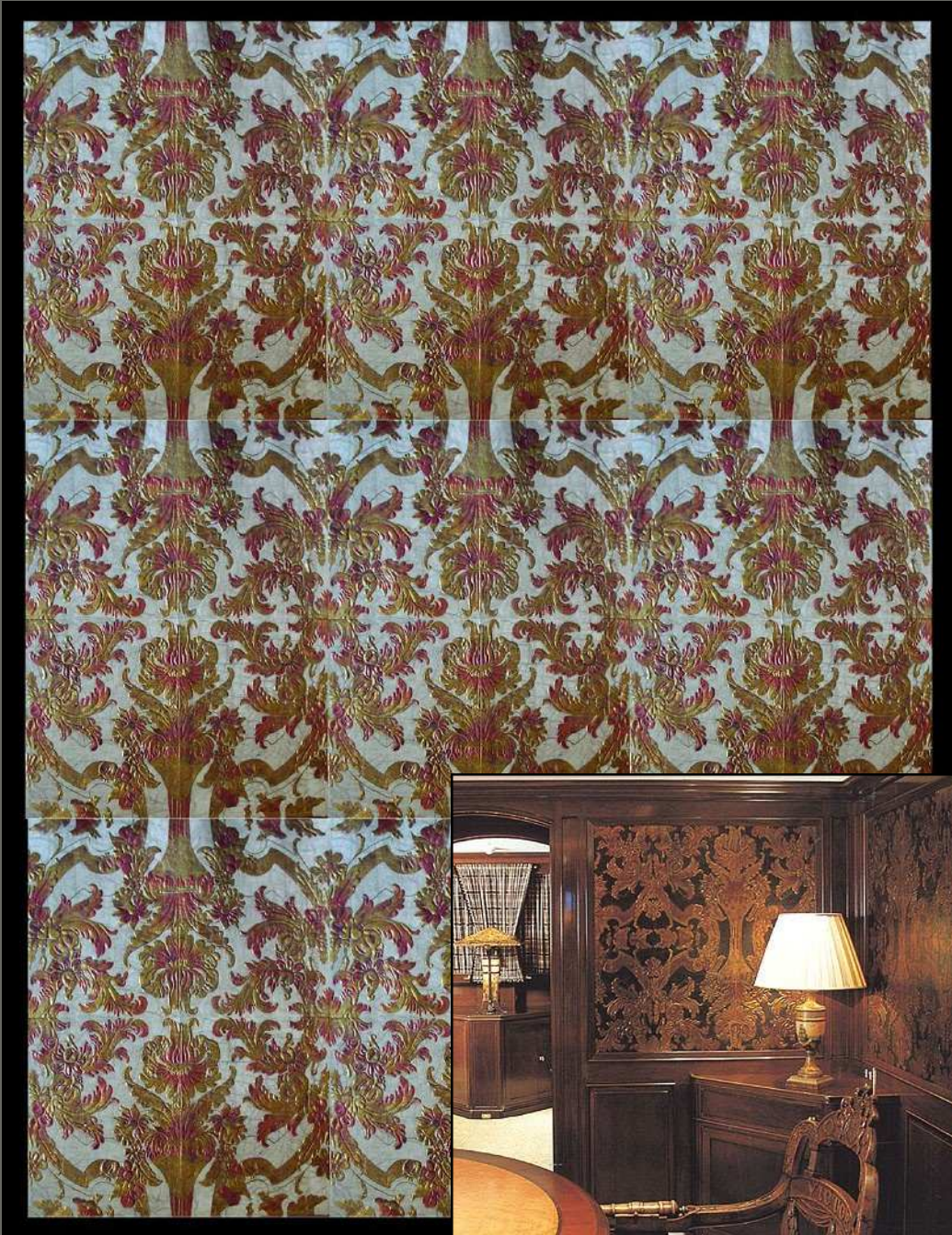
Circa 1750

bottom right page : Double Damask in a yacht.

A semi polychrome version

Double Damask

9 sets of 4 panels





Cartouche

71.8 x 22.95 cm 28.3 x 22"

Origin: unknown, this design can be seen at the " Deutches Tapeten Museum"
Kassel Germany.

Circa 1750

This design has a left and a right hand panel.
Here as a polychrome "custom" version





Curules

72 x 66 cm 28.3 x 26"

Origin: Antiquity

Curules
white on white



Utopia

A fourfold screen as made during the Japanese Edo period

280 x 150 cm 110" x 58"

"Pièce Unique"



Besides being valuable decorative items in Japan, these gilded screens were highly appreciated gifts from the Japanese to the Korean and Chinese.

In Japan gilded screens were used to create a confined and extraordinary environment where the rich and powerful could negotiate in a neutral space in which status and hierarchy were temporarily suspended.

These screens are made-to-order.



Salon du Patrimoine Culturel
Paris





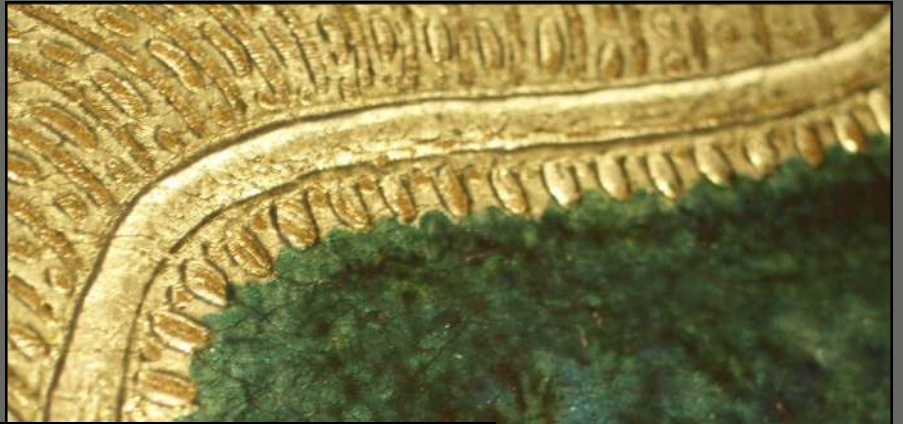
Verne

102 x 78 cm 40.2 x 30.7"

Origin : Lutson
based on an early 18th possibly late 17th century
archive design.

Panel made out of two sections

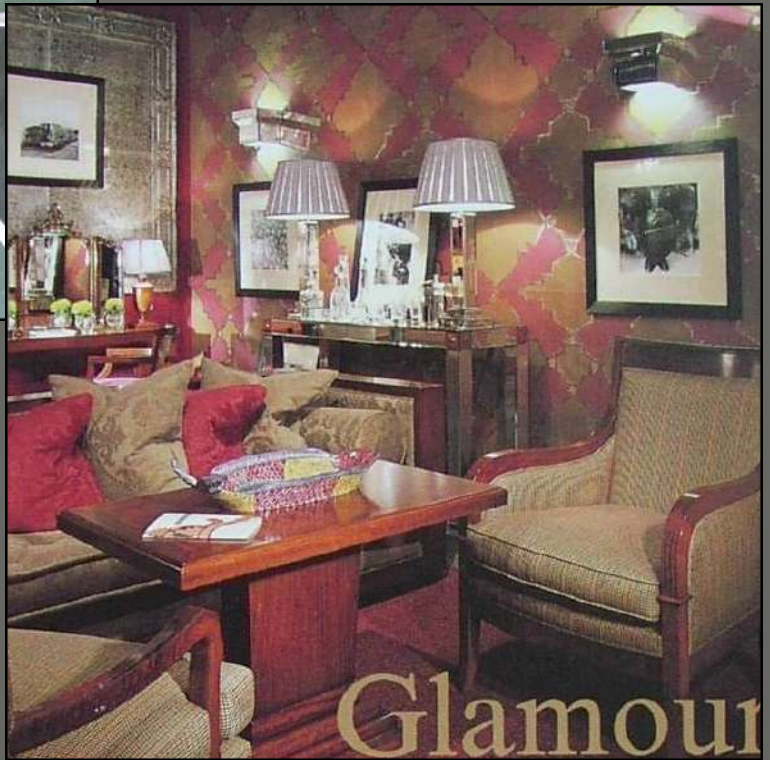
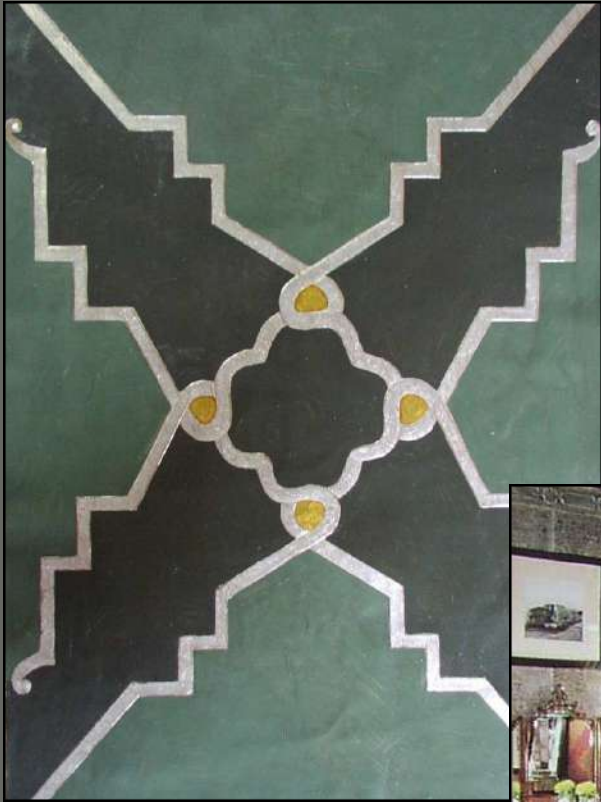
Some details



Deco

90.5 x 65 cm 35.6 x 25.6"





At Decorex London

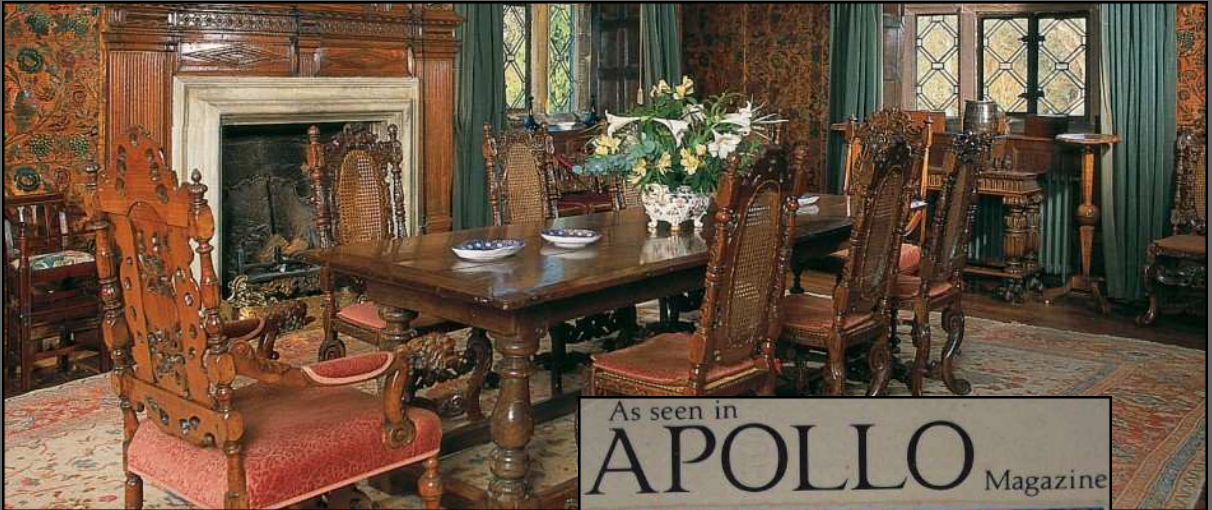
Parrot Panel

75 x 59 cm 29,5 x 23,2"
a reproduction



A detail of the original 1740 panel,
next to its reproduction by Lutson.
This panel was made for a
a London based renowned designer and
antiques dealer.





The dining room at Levens Hall.

The walls are lined with the original
1740 gilt leather tapestries.



Heritage:

Isabella Stewart Gardner Museum the Tapestry Room

The "Institut National des Métiers d'Art" has listed Lutson in
the "Inventory of Rare Crafts"



Heritage:

At Lutson we can make replicas of almost any Gilt Leather design.

We make the embossing plates

We modulate the metallic grounds in order to match the existing original Gilt Leather

finally, oil paints are mixed and hand applied.

At Lutson we are proud to have worked with institutions such as.

Isabella Stewart Gardner Museum Boston, Metropolitan Museum of Art NY

MetLife NY, Halwylska Stockholm.

As with renowned designers worldwide.

Above: Metlife Boardroom. N.Y.

Lutson Modern

By

Luttylux

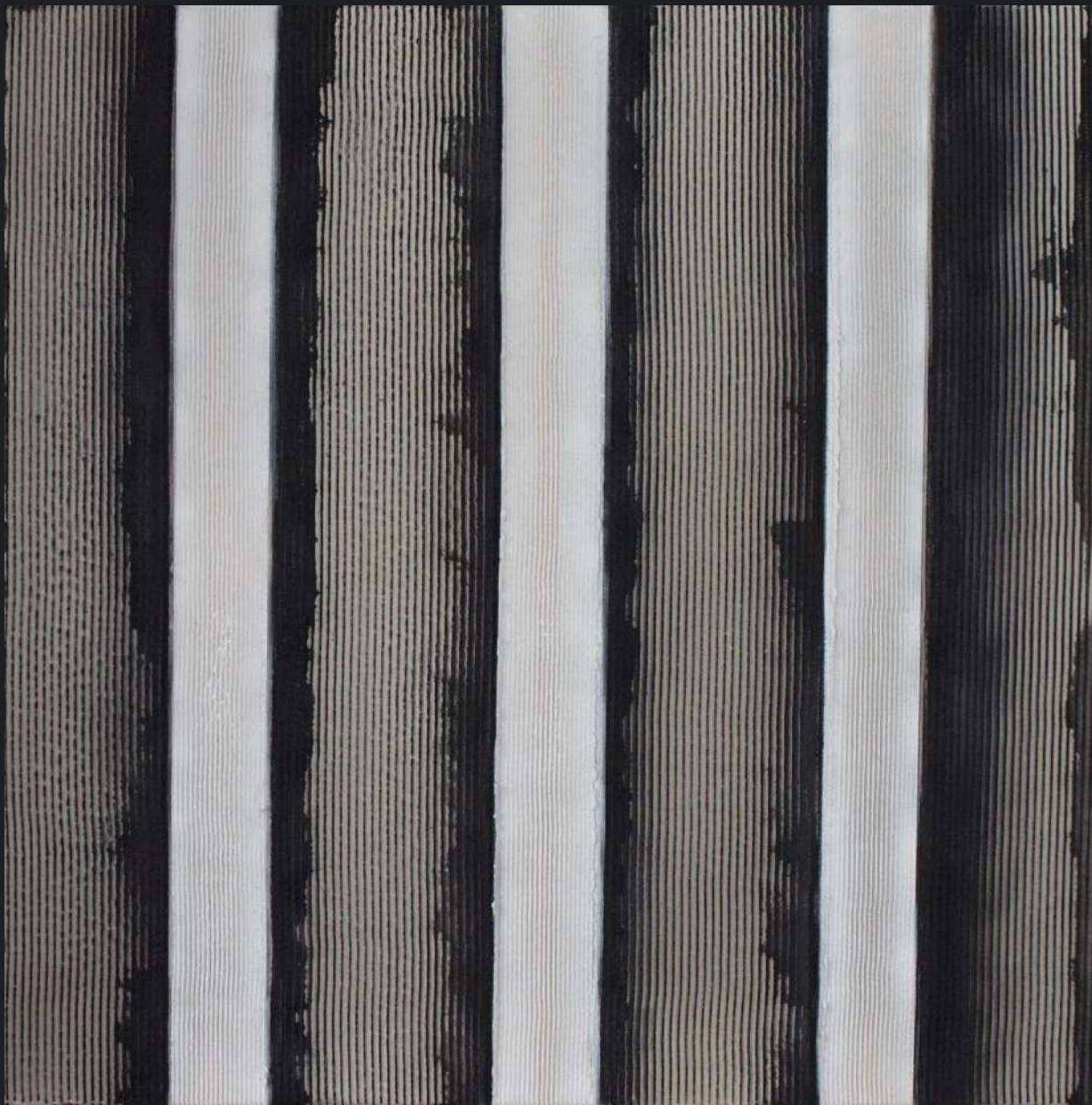
Provides original decorative artwork.

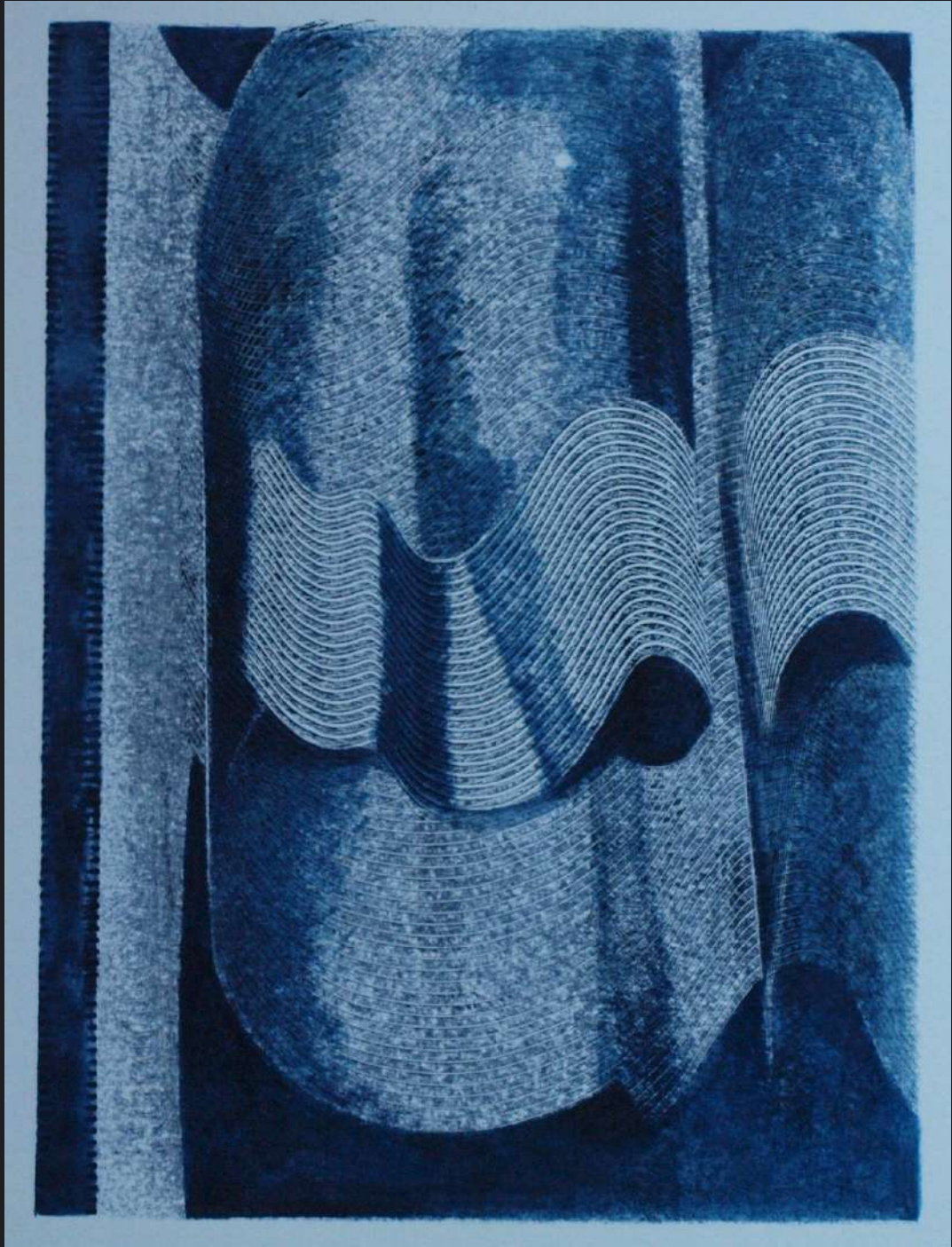
All Items are "pièces uniques"

Artworks from Lutson Modern can be produced to order.

Please contact us.







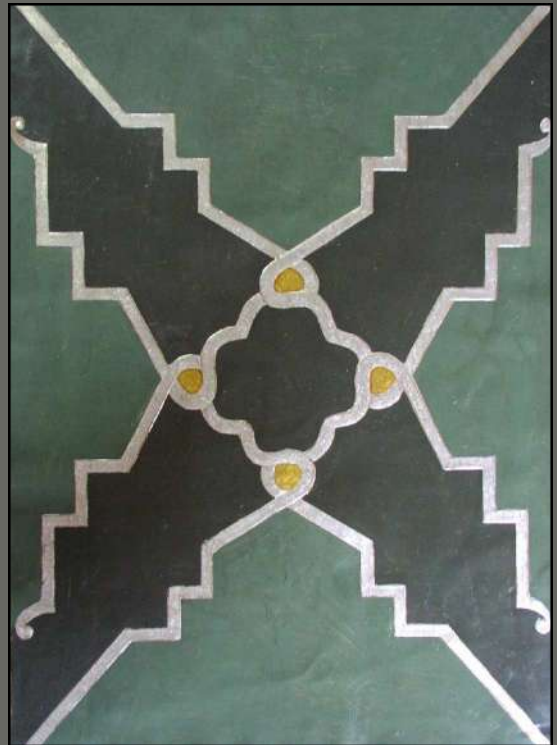


above: Grimm

72 x 72 cm 28.3 x 28.3"

right: Deco

90.5 x 65 cm 35.6 x 25.6"



Nora

45 x 46 cm 17.7 x 18.1"

Origin: Scandinavia ?

Circa: ?



Keys

Design 30 x 40 cm 11.8 x 15.7"

Panel: 74 x 68 cm

29.1 x 26.8



Seats and Backs
Several designs available
please ask



Lauderdale & Cabochon Borders.

Lutson leathers
As seen in the
New York Style



Lut, Géraldine & Frederic
by: Photoeil.be



Henri De Braekeleer Antwerp 1875

Gilt Leather for the 21st century by Lutson Goudleer ?
Ponder this !



Lutson Goudleer Handcrafted

It's In The Details



WWW.LUTSON.COM