



Nina Dorfer
PARIS

Series 1 : *Finding Serenity*

Ronit Anderson
www.ronitanderson.com
ronit@ronitanderson.com

Nina Dorfer
www.ninadorfer.com
hello@ninadorfer.com

Exhibition catalogue

© Novembre 2021



This collection is inspired by two objects I found in my father's basement during the first lockdown in the Austrian countryside. The pieces date back to 1926 and he's kept them from the farm where he grew up on. The table was used for cutting meat and the bench for cutting or carving wood. I washed them, sandpapered them, removed rusty nails and heated them in my dad's sauna (if he only knew) to get rid of the woodworms.

After putting on a new varnish, they transformed and came to life. The warm surface, the textures formed through time and the touch as soft as butter. The pieces inspired this collection and the atmosphere around it, enjoy!

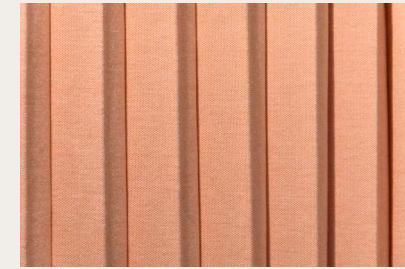
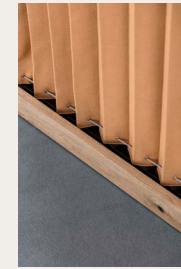
“*Finding Serenity*” is a series of objects and explores the impact of form, material and color. In a way, it was also a cathartic approach, an inner quest to find ease and stillness in everyday life. What motivated me and why was it so important? Let me explain how I got here:

When I signed up for the Knitwear Design course at the University of the Arts in Vienna, I didn’t realize what this would mean later on professionally. We had the chance to work on real industrial machines, free to play between computer software and knitting machine, with an arsenal of materials at our disposal.

My teacher telling me “it’s technically impossible” made me decide to never wanting to depend on a technician and to just do it myself. After I graduated I wanted to find a job that combines technique and design but found out that there wasn’t - you could only be a technician. So in a sense I ‘toured’ Europe, taking on job offers that got me further.

After 6 years in the business, it was time to create my own version of the job. Why do I have to decide to be an engineer or a designer when I can just be both?

Nina Dorfer



**PARAVENT
DÉGRADÉ**

eggyolk, chestnut and ivory

steel and oak framework, merino wool knit;
collaboration with Emjot Design (Austria)

Height 200 cm
Width 430 cm
Depth 15 cm



**BENCH
JOHANNA**

whitened varnish and light brown textile

oak wood, knit made of linen and Tencel;
collaboration with Emjot Design (Austria)

Height 50 cm
Width 87 cm
Depth 32 cm

+ available in natural varnish
+ textile available in more colours



**BENCH
FRANZ**

natural varnish

oak wood
collaboration with Emjot Design (Austria)

Height 50 cm
Width 87 cm
Depth 32 cm

+ available in whitened varnish



**BENCH
POPSICLE**

cream white and lollipop pink
steel framework, merino wool knit;
collaboration with Emjot Design (Austria)

Height 49 cm
Width 250 cm
Depth 30 cm



**CUSHION
WOODWORM**

natural white and mélange sundown
merino wool knit;

Height 50 cm
Width 70 cm

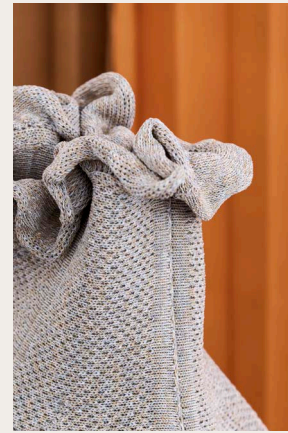


**TABLE LAMP
PIPO PYJAMA**

cream white

base in oak wood, merino wool knit;
collaboration with Simone & Marcel (Spain)

Height 58 cm
Width 40 cm
Depth 40 cm



**VASE
BUBBLE BIG**

dizzy desert

oak wood base, steel fishbone, cotton knit;

Height 58 cm
Diameter 36 cm



trouvés
dans le
sein de
1926 et
dans un
billot,
sans
utilisation

**VASE
BUBBLE MINI**

dizzy desert
steel fishbone, cotton knit;
Height 50 cm
Diameter 24 cm



**VASE
TRIANGLE**

olive green
oak wood base, steel fishbone, cotton knit;
Height 68 cm
Diameter 31 cm





**VASE
PETIT POIS**

dirty mint green

oak wood base, steel fishbone, cotton and merino wool knit;

Height 124 cm
Depth 43 cm



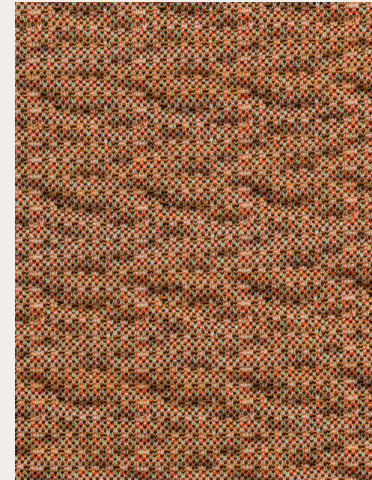
**UPHOLSTERY
WOODWORM MINI**

pepper black

technical upholstery knit in wool and polyester;

details:

- + > 100.000 Martindale
- + fabric width 140 cm
- + available in flame retardant yarn
- + personalization possible



**UPHOLSTERY
WOODWORM
LARGE**

burnt orange

technical neoprene upholstery knit in wool and polyester

details:

- + > 85,000 Martindale
- + fabric width 140 cm
- + available in flame retardant yarn
- + personalization possible

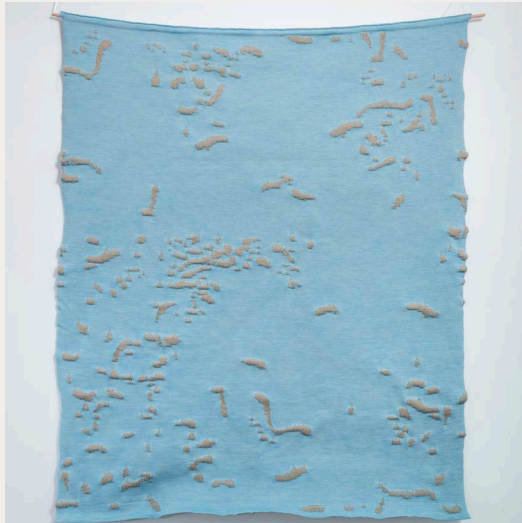
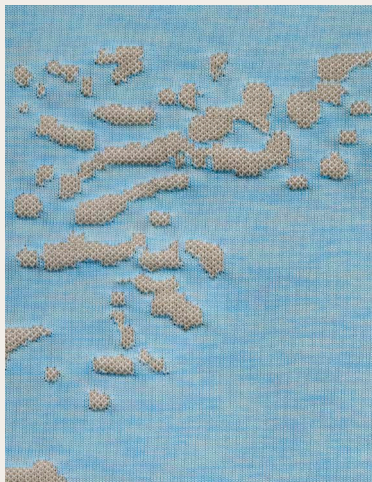
**UPHOLSTERY
ZIGZAG TWEED**

rouge japonais

technical quilted upholstery knit in wool and polyester;

details:

- + > 85,000 Martindale
- + fabric width 140 cm
- + available in flame retardant yarn
- + personalization possible



**UPHOLSTERY
WOODWORM
LARGE**

ice blue

technical twill upholstery knit in wool and polyester;

details:

- + > 85,000 Martindale
- + fabric width 140 cm
- + available in flame retardant yarn
- + personalization possible

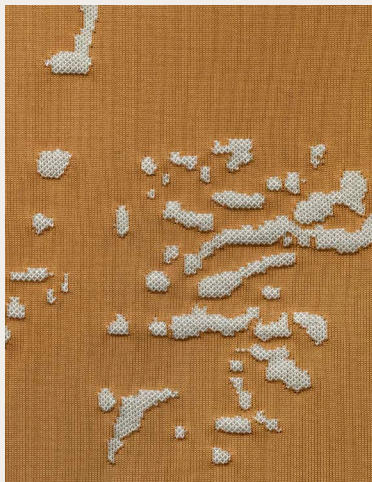
**UPHOLSTERY
WOODWORM
MEDIUM**

turquoise seaweed

technical jacquard upholstery knit in wool and polyester;

details:

- + > 120,000 Martindale
- + fabric width 140 cm
- + available in flame retardant yarn
- + personalization possible



**UPHOLSTERY
WOODWORM
LARGE**

light cognac

technical twill upholstery knit in wool and polyester;

details:

- + > 85,000 Martindale
- + fabric width 140 cm
- + available in flame retardant yarn
- + personalization possible

**UPHOLSTERY
SQUARE TWEED**

nordic red blue

technical quilted upholstery knit in wool and polyester;

details:

- + > 85,000 Martindale
- + fabric width 140 cm
- + available in flame retardant yarn
- + personalization possible

Series 1 : *Finding Serenity*

TECHNICAL UPHOLSTERY FABRIC

We are delighted to offer you a range of fabrics which can be modified to your brand DNA.

Our products are made-to-order and in limited edition. Delivery time 6-8 weeks.

Want to feel and try the materials? Click [here](#) to order A5 samples on-line!

Do not hesitate to contact us for **tailor-made options**, we are delighted to help you find the right solution!

Cheers,
Nina Dorfer

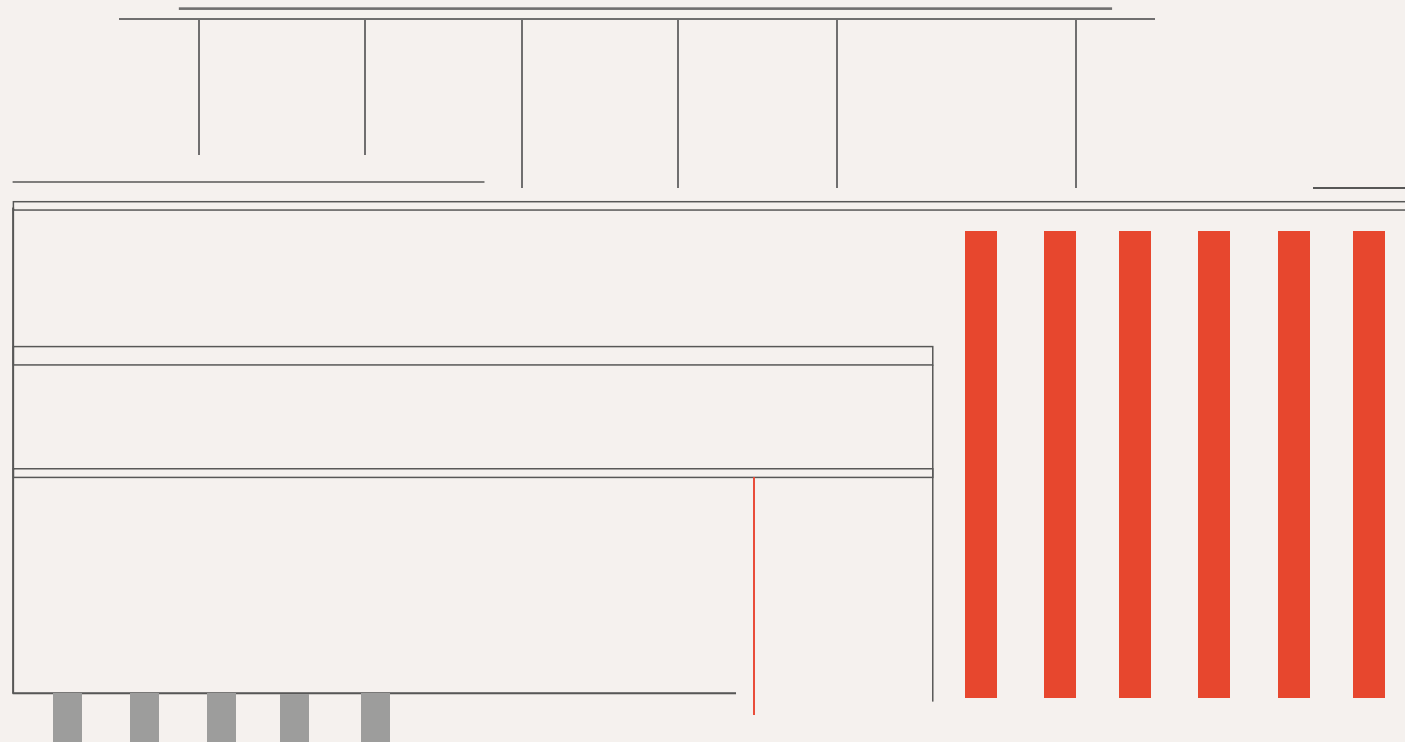
Ronit Anderson
hello@ninadorfer.com www.ronitanderson.com
www.ninadorfer.com ronit@ronitanderson.com



RONIT ANDERSON

Nina Dorfer
PARIS

Series 2:
The Desert House



Ronit Anderson
www.ronitanderson.com
ronit@ronitanderson.com

Nina Dorfer
www.ninadorfer.com
hello@ninadorfer.com

Exhibition catalogue

INSPIRATION





EXHIBITION SPACE
Presentation of Series 2 in Paris



RANGE™
Upholstery fabric collection



VASE BUBBLE XL

VASE SHRUB

MINI VASE SHRUB

3d knitted vase on walnut base



**HAMILTON CONTE X
NINA DORFER PARIS**

POUF CAMI ROUND

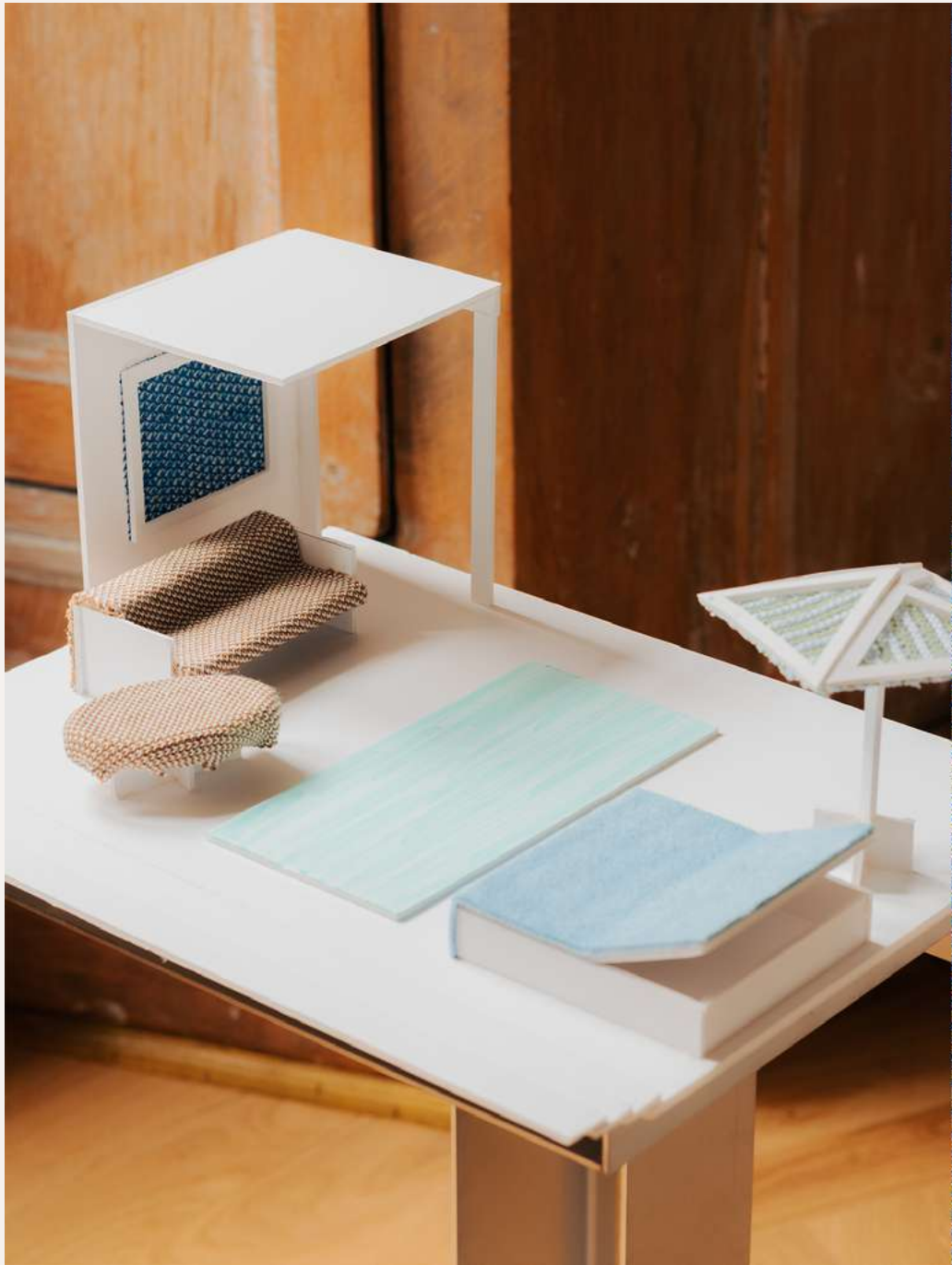
Tweed Rose



**HAMILTON CONTE X
NINA DORFER PARIS**

POUF CAMI ROUND

Bouclé Honolulu Blue



THE POOL HOUSE
Upholstery fabric selection



THE OFFICE

Upholstery fabric selection

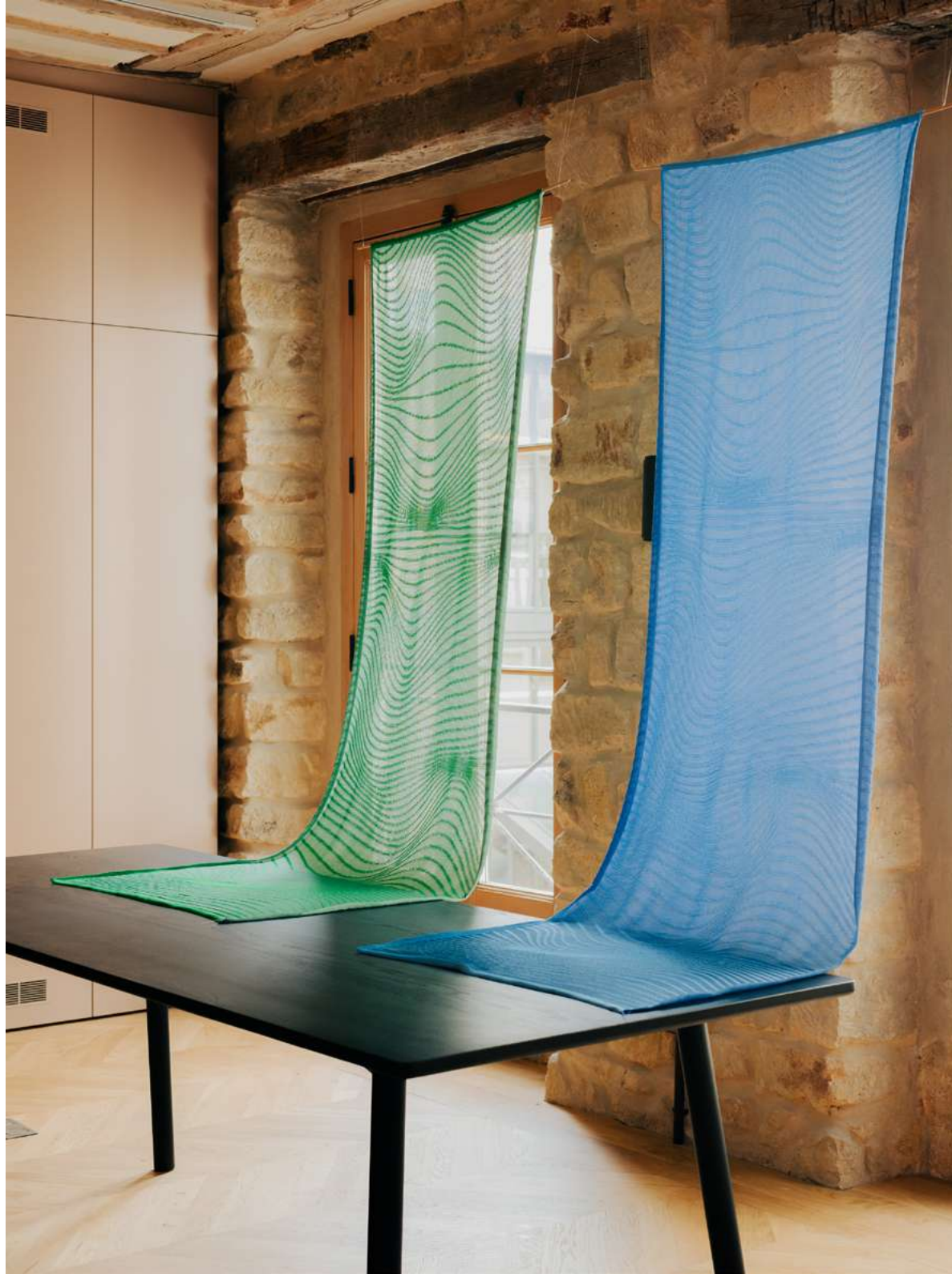


THE LIVING
Upholstery fabric selection



TABLE LAMP PIPO

Jacquard Midnight Sparkle



**LIGHTWEIGHT PATTERNED
VEIL**

Optical Transparent



CLICK ANY IMAGE TO PLAY!



DIGITAL ANIMATION

3d objects and scenes created in Blender

BOUCLÉ ELASTIC

Martindale: > 50.000

Materials: WO 87%, EL 7%, PES 6%

Fabric width: 110cm

Weight: 1335 g/m²

Elasticity: high



GREIGE



SANDDUNE



HONOLULU

BRUSH STROKE

Martindale: > 50.000

Materials: WO 68%, PES 32%

Fabric width: 140 cm/165 cm

Weight: 839 g/m²

Elasticity: medium



CREAM



SILVER DENIM



ANTHRAXITE

RGB

Martindale: > 50.000

Materials: WO 40%, PES 60%

Fabric width: 140 cm/165 cm

Weight: 945 g/m²

Elasticity: medium



GRADIENT



CUBES

DON WAFFLE

Martindale: > 50.000

Materials: WO 35%, PES 47%, EL 5%, PP 13%

Fabric width: 1471 cm

Weight: 867 g/m²

Elasticity: high



RAINBOW GREEN



RAINBOW MAUVE



SILVER NIGHT



AUBERGINE NIGHT

TWEED RUFFLE

Martindale: > 50.000

Materials: WO 46%, PA 4%, PES 43%, EL 7%

Fabric width: 140 cm

Weight: 960 g/m²

Elasticity: high



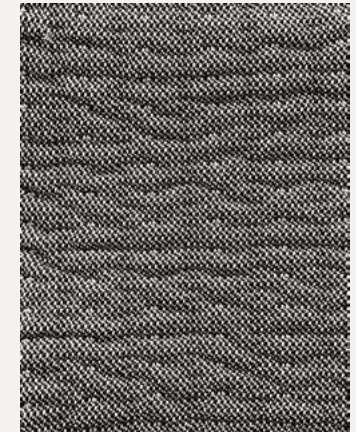
ROSE



SILVER BLUE



FOREST BLUE



ANTHRAZITE

DIAMOND WEAVE

Martindale: > 15.000

Materials: CO 20%, PES 80%

Fabric widths: 140 cm

Weight: 247 g/m²

Elasticity: low



CORN



TOMATO

RANGE™

Martindale: > 50.000

Materials: WO 48%, PA 2%, PES 50%

Fabric widths: 140 cm/165 cm

Weight: 975 g/m²

Elasticity: medium



MIDNIGHT



AUBERGINE



STEEL BLUE



ELECTRIC BLUE



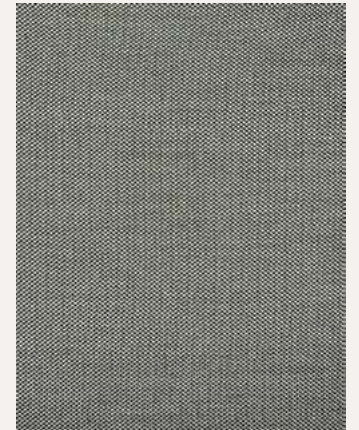
SILVER



DENIM



OLIVE



MUD GREEN



PICKLE



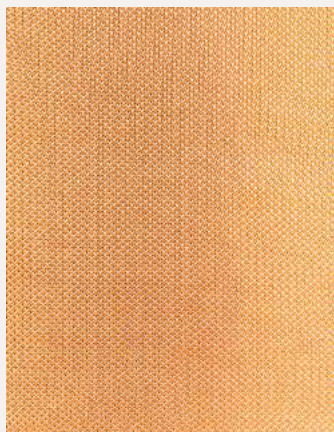
WALNUT



CAMEL



TEDDYBEAR



EGGYOLK



RUST



MAUVE



SEA BLUE



PINK

VELVET ELASTIC

Martindale: > 15.000

Materials: VI 65%, PES 33%, EL 2%

Fabric widths: 140 cm

Weight: 695 g/m²

Elasticity: high

Series 2:
The Desert House



UPHOLSTERY FABRICS & KNIT OBJECTS

We are delighted to offer you a variety of fabrics with the possibility to be **tailored to your project** or brand colours.

Custom fabric **properties, quantities** or fabric **widths**.

Our textiles are made-to-order.
Delivery time 4-6 weeks.

Want to feel and try the materials?
[Click here](#) to **order your samples** online!

Do not hesitate to **contact us!**

Cheers,

Nina Dorfer

PARIS

hello@ninadorfer.com
www.ninadorfer.com

Ronit Anderson
www.ronitanderson.com
ronit@ronitanderson.com

Nina Dorfer

PARIS

The Secret Garden

Series 3



RONIT ANDERSON



Inspiration

The early 20th century witnessed a **transformative period** in the world of design, marked by the emergence of the *Wiener Werkstätte*, a “Viennese Workshop” that would revolutionize artistic expression and **empower women designers** in ways previously unimagined. Born from the collaborative efforts of artists Josef Hoffmann and Koloman Moser in 1903, the *Wiener Werkstätte* swiftly gained recognition for its innovative approach to **merging art and craftsmanship**.

Amidst this creative wave, female designers played a pivotal role, **challenging the male-dominated landscape** of the era. These women not only carved a niche for themselves but also laid the foundation for a **progressive, inclusive design** movement. Names like Dagobert Peche, Maria Likarz-Strauss, and Mathilde Flögl are emblematic of the *Wiener Werkstätte*’s commitment to **gender parity** in design.

The lives of these female designers were marked by a pursuit of excellence that defied societal norms. **Striving for artistic liberation**, they found inspiration in diverse sources, from nature’s intricate forms to abstract geometry. Maria Likarz-Strauss, for instance, embraced the organic beauty of flowers, her creations showcasing a symphony of colors and shapes that **celebrated the feminine spirit**.



Mathilde Flögl, on the other hand, drew from her background in ceramics to infuse her designs with a tactile, three-dimensional quality. Her creations exuded a **sense of modernity** that was both captivating and forward-thinking, reflecting the evolving sensibilities of the age.

What truly set these women apart was their **collective** approach to design. They defied convention, refusing to be confined by traditional gender roles. Their artistic process encompassed a **synthesis of materials**, techniques, and ideologies. They believed in the power of collaboration and interdisciplinary exchange, pushing boundaries and blurring the lines between fine art and craftsmanship.

As the Wiener Werkstätte's influence expanded, so did the legacy¹ of these female designers. Their creations became emblematic of **an era that championed creativity**, innovation, and gender equality. Today, their spirit lives on, inspiring a new generation of designers to challenge norms and forge their own artistic paths.

*1 https://sammlung.mak.at/en/collection_online?&q=wiener%20werkst%C3%A4tte&fq_string_short_description_en-US=textile%20design



Showroom

“The Secret Garden”

September 7-11, 2023
47 rue de Montmorency
75003 Paris



Curtain Ombrage



W: 400 cm
H: 240 cm

100% Cotton

Inflatable Cushion Ombrage



90 x 120 cm

100% Cotton

Insert cushion: Kraft paper

Collaboration with Dan Yeffet^{*2}

*2 <https://www.danyeffet.com/>



Modern Neoprene Upholstery

HISTORICAL CONTEXT:

One of the **design principles** of the Wiener Werkstätte (Viennese Workshop) was to bridge the gap between fine arts and crafts, resulting in a desire to **elevate the quality** of everyday objects.

APPROACH:

We took an ordinary **neoprene** fabric (back in 1930 a product of innovation) and **infused** the textile construction with noble fibres to create an everlasting and exquisite modern version **with silk**.

Upholstery Fabric Dentil



Fabric width: 140 cm

44% Silk
56% Merino

Upholstery Fabric Echinus



Fabric width: 140 cm

46% Silk
54% Merino

Upholstery Fabric **Abacus**



Fabric width: 140 cm

45% Silk
55% Merino

Inflatable Cushion Abacus



90 x 120 cm

44% Silk
56% Merino

Insert cushion: Kraft paper

Collaboration with Dan Yeffet³

³ <https://www.danyeffet.com/>



Boiled wool Felting

HISTORICAL CONTEXT:

The design era of the *Wiener Werkstätte* (Viennese Workshop) valued **simple, pragmatic and functional shapes** and while incorporating decorative abstract patterns. The objects were meant to be used and **enjoyed in everyday life**, not merely as decorative pieces.

APPROACH:

Knitted and **boiled-wool fabrics** are deeply rooted in Austrian culture. By harmoniously mixing warm, soft and insulating textures we **merge art with craftsmanship** in imaginative intarsia and jacquard patterns.



Tapestry The Lost Canvas



H: 210 cm
W: 155 cm

Jacquard in alpaca, silk, virgin
and merino wool, cashmere;
Hand-embroidered silk

Unique piece

Pouf Milo



H: 42 cm
W: 45 cm

Jaquard in alpaca, silk, virgin and merino wool, cashmere;

Collaboration with Hamilton Conte⁴

^{*4} <https://hamiltonconte.com/>

Cushion

Mû 80x80



H: 80 cm
W: 80 cm

Intarsia in alpaca, silk, virgin
and merino wool, cashmere;

Insert cushion: 100% feathers

Cushion

Mû 60x60



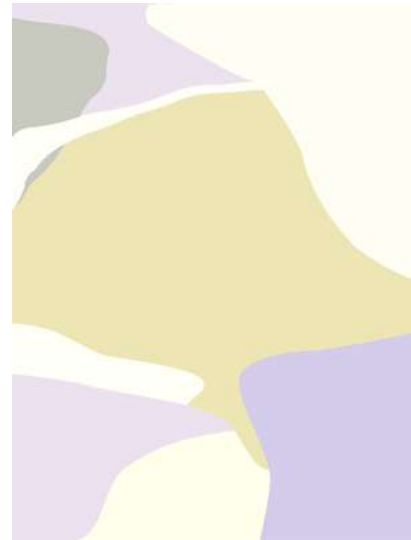
H: 60 cm
W: 60 cm

Intarsia in alpaca, silk, virgin
and merino wool, cashmere;

Insert cushion: 100% feathers



Plaid
Mû 170x130



H: 170 cm
W: 130 cm

Intarsia in alpaca, silk, virgin
and merino wool, cashmere;

Pouf Fungo

H: 32cm
L: 41cm
W: 41cm

Solid walnut
81% Wool
19% Silk

Solid walnut
81% Alpaca
19% Silk

Collaboration with Flores Studio⁵



*⁵ <https://www.florestextilestudio.com/>



RONIT ANDERSON

Ronit Anderson
www.ronitanderson.com
ronit@ronitanderson.com



2023
®